



TRIDON ▶

Product Catalog



***Trust the Clamp
Professionals***

Automotive • Hardware • Industrial • Marine • M.R.O. • O.E.M. • Plumbing



For Quality, Service & Selection, Trust the Clamp Professionals

Founded in 1913, IDEAL, A Tomkins Company, is the largest and most-trusted clamp manufacturer in North America, and is expanding their Aftermarket and OE clamp business around the globe. As the leading clamp designer and manufacturer, we at IDEAL invite you to explore our IDEAL® and TRIDON® clamps catalog for automotive, industrial, hardware, plumbing, marine, heavy equipment and specialty hose clamps.

We are headquartered in St. Augustine, Florida, with manufacturing operations in St. Augustine, Florida; Smyrna, Tennessee; Matamoros, Mexico; and Suzhou, China. Together, our facilities manufacture worm drive hose clamps, high-torque clamps, constant tension clamps, T-Bolts, V-Inserts, no-hub couplings, and a host of specialty and custom clamp products. We provide superior quality clamping and sealing products, selling to an ever-growing list of distributors, warehouses, retailers, M.R.O. and O.E. businesses.

Our products and services promote engineering ingenuity, market driving initiatives, and a commitment to excellence. Customers benefit from our:

- Wide selection of bands, screws, housings and special features
- Design, engineering and manufacturing expertise
- Material and metallurgical science specialists
- Automated assembly processes
- Advanced screw manufacturing technology
- High-speed stamping
- Sensors and visual control systems
- Attractive and marketable packaging
- Established distribution channels
- Testing and analysis
- Performance and specifications documentation
- Inventory control options

Quality & Engineering

Our commitment to superior quality, environmental responsibility, and process integrity has allowed us to earn and maintain facility certifications for ISO 9001 and 14001, as well as TS16949.

Our facilities use only the finest quality AISI-certified steel and best manufacturing practices for clamp products you can trust.

We operate using the latest manufacturing equipment and facilities, from networked manufacturing complexes to advanced laboratory analysis. Our diversified team of engineers and operators are equipped with the most sophisticated testing labs and machine-tuning capabilities. We test and certify our clamp performance to stringent industry standards and real-life conditions resulting in the ultimate product satisfaction.

Our labs and technicians perform temperature tests, salt spray tests, band load and tension tests, calibration tests, and often develop custom procedures to fit customer requirements. We can develop custom designs for any application, from band notching and slotting to special finishes and screw head designs. Using 3-D modeling that includes stress and finite elemental analysis, we can help determine the best materials and configuration for your application.

Partnership

Let us help you create a clamp mix for your distribution or supply your next order for a production line. We can connect you with our sales representatives, and welcome you to partner with us as you plan your next clamp program.

Both IDEAL® and TRIDON® brands offer:

- Excellent customer service
- Experienced industry engineering talent
- A broad range of high quality clamp products

Our collaborative techniques set global standards and reflect excellence in everything we do. Whether you need a standardized product or specialized attention, we have the team, the facilities and the knowledge to deliver. For Quality, Service and Selection, Trust the Clamp Professionals.

Stay current on our services and product offerings at www.idealclamps.com.

IDEAL® and TRIDON® clamp brands are registered trademarks of IDEAL, A Tomkins Company. IDEAL is parented by Tomkins, plc.

Headquartered in London, Tomkins is a world-class global engineering and manufacturing group with market and technical leadership across two businesses: Industrial & Automotive and Building Products. Its products are sold into a wide variety of end-markets. Tomkins ordinary shares are listed on the London Stock Exchange under the symbol TOMK, and also trade in ADR form on the New York Stock Exchange under the symbol TKS. For further information, go to www.tomkins.co.uk.

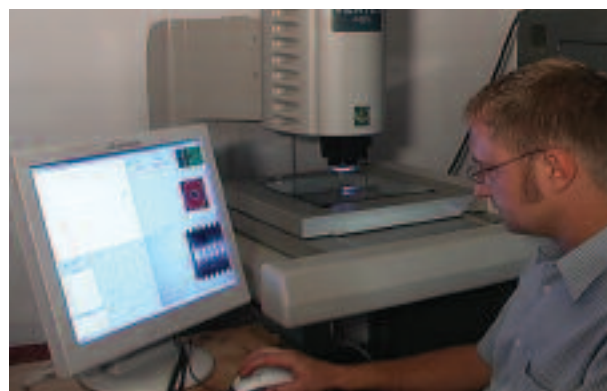
Geographical Markets:

- U.S.A./Canada
- Mexico
- Central America
- South America
- Europe
- Asia
- Africa
- Australia & New Zealand

Industry Markets:

- General Aftermarket & Replacement
- OEM: Original Equipment Manufacturing
- Automotive
- Heavy Equipment
- Industrial
- Food Processing and Sanitation
- Marine
- Hardware
- Plumbing
- Government & Military
- Truck & Engine
- Telecommunications

For more about the markets we serve, visit us at: www.idealclamps.com.





**50/150
Series**



**68
Series**



**64
Series**



**63/225
Series**



**63-4
Series**

Hy-Gear® 9/16" Worm Drive Clamps

Full-size industry-standard worm drive 9/16" band clamps have a wide range of applications, from simple home and auto repair to heavy industrial uses. The bands have clean punched rectangular perforations that hold strong and connect easily.

Ideal® 50 Series / Tridon® 150 Series

Stainless Steel and Plated Parts.
Screw: 5/16" hex-head, plated carbon steel.
Band: 9/16" band width, 201/301 stainless steel.
Housing: 201/301 stainless steel.

Ideal® 68 Series

All Stainless Steel Parts, specially suited for industrial applications.
Screw: 5/16" hex slotted. 410 stainless steel.
Band: 9/16" band width. 201/301 stainless steel.
Housing: 201/301 stainless steel.

Ideal® 64 Series

All Stainless Steel Parts, specially suited for industrial applications.
Screw: 3/8" hex slotted. 410 stainless steel.
Band: 9/16" band width. 201/301 stainless steel.
Housing: 201/301 stainless steel.

Ideal® 63 Series/Tridon® 225 Series

All Hi-Nickel Alloy Stainless Steel Parts for better corrosion resistance.
Screw: 5/16" hex slotted. 305 stainless steel.
Band: 9/16" band width. 201/301 stainless steel.
Housing: 201/301 stainless steel, with UPC shield.

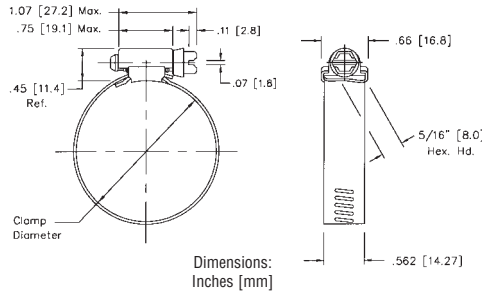


Ideal® 63-4 Series

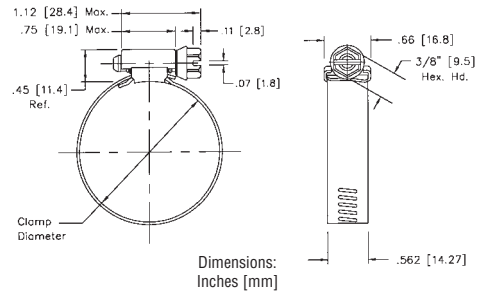
All 300 Series Marine Stainless Steel Parts for better corrosion resistance.
Screw: 5/16" hex slotted. 305 stainless steel.
Band: 9/16" band width. 301 stainless steel.
Housing: 300 stainless steel, with UPC shield.



5/16" Hex Head



3/8" Hex Head



FULL SIZE CLAMPS											CLAMPING RANGE					
SAE Sizes	Ideal Part No.	Tridon Part No.	Ideal Part No.	Tridon Part No.	Ideal Part No.	Tridon Part No.	Ideal Part No.	Tridon Part No.	Ideal Part No.	Tridon Part No.	Min.Dia. (in.)	Max.Dia. (in.)	Min.Dia. (mm)	Max.Dia. (mm)	Hose I.D. Min. (in.)	Hose I.D. Max. (in.)
	50	150	68	N/A	64	N/A	63	225	63-4	N/A						
6	5006	—	6806	—	6406	—	6306	—	—	—	3/8	7/8	10	22	5/16	3/8
8	5008	—	6808	—	6408	—	6308	—	—	—	7/16	1	11	25	5/16	1/2
10	5010	150-010	6810	—	6410	—	6310	225-010	63004-0010	—	1/2	1 1/16	13	27	3/8	5/8
12	5012	150-012	6812	—	6412	—	6312	225-012	63004-0012	—	1/2	1 1/4	13	32	3/8	3/4
16	5016	150-016	6816	—	6416	—	6316	225-016	63004-0016	—	11/16	1 1/2	18	38	3/4	7/8
20	5020	150-020	6820	—	6420	—	6320	225-020	63004-0020	—	3/4	1 3/4	19	44	3/4	1 1/8
24	5024	150-024	6824	—	6424	—	6324	225-024	63004-0024	—	1	2	25	51	7/8	1 3/8
28	5028	150-028	6828	—	6428	—	6328	225-028	63004-0028	—	1 1/4	2 1/4	32	57	1 1/4	1 5/8
32	5032	150-032	6832	—	6432	—	6332	225-032	63004-0032	—	1 1/2	2 1/2	38	63	1 1/2	1 7/8
36	5036	150-036	6836	—	6436	—	6336	225-036	63004-0036	—	1 3/4	2 3/4	44	70	1 3/4	2
40	5040	150-040	6840	—	6440	—	6340	225-040	63004-0040	—	2	3	51	76	2	2 1/4
44	5044	150-044	6844	—	6444	—	6344	225-044	63004-0044	—	2 1/4	3 1/4	57	82	2 1/4	2 1/2
48	5048	150-048	6848	—	6448	—	6348	225-048	63004-0048	—	2 1/2	3 1/2	64	89	2 1/4	2 3/4
52	5052	150-052	6852	—	6452	—	6352	225-052	63004-0052	—	2 3/4	3 3/4	70	95	2 3/4	3
56	5056	150-056	6856	—	6456	—	6356	225-056	63004-0056	—	3	4	76	101	3	3 1/2
60	5060	150-060	6860	—	6460	—	6360	225-060	63004-0060	—	3 1/4	4 1/4	83	108	3 1/4	3 3/4
64	5064	150-064	6864	—	6464	—	6364	225-064	63004-0064	—	2 1/2	4 1/2	64	114	2 1/2	4
72	5072	150-072	6872	—	6472	—	6372	225-072	63004-0072	—	3	5	76	127	3	4 1/2
80	5080	150-080	6880	—	6480	—	6380	225-080	63004-0080	—	3 1/2	5 1/2	89	140	3 1/2	5
88	5088	150-088	6888	—	6488	—	6388	225-088	63004-0088	—	4	6	102	152	4	5 1/2
96	5096	150-096	6896	—	6496	—	6396	225-096	63004-0096	—	4 1/2	6 1/2	114	165	4 1/2	6
104	50104	150-104	68104	—	64104	—	63104	225-104	63004-0104	—	5	7	127	178	5	6 1/2
116	—	—	68116	—	—	—	63116	225-116	63004-0116	—	5 3/4	7 3/4	146	197	5 1/2	7
128	—	—	—	—	—	—	63128	225-128	63004-0128	—	2 1/2	8 1/2	64	216	3	7 1/2
140	—	—	—	—	—	—	63140	—	63004-0140	—	7 1/4	9 1/4	184	235	7 1/2	8 1/2
152	—	—	—	—	—	—	63152	225-152	63004-0152	—	8	10	51	254	2 1/2	9 1/2
164	—	—	—	—	—	—	63164	—	63004-0164	—	2	10 3/4	51	273	2 1/2	10
176	—	—	—	—	—	—	63176	—	63004-0176	—	9 1/2	11 1/2	241	292	10	11
188	—	—	—	—	—	—	63188	225-188	63004-0188	—	10 1/4	12 1/4	51	311	2 1/2	11 1/2
208	—	—	—	—	—	—	63208	—	63004-0208	—	11 1/2	13 1/2	292	343	12	13
224	—	—	—	—	—	—	63224	—	63004-0224	—	12 1/2	14 1/2	318	368	13	14
236	—	—	—	—	—	—	63236	—	63004-0236	—	13 1/4	15 1/4	337	387	13 1/2	14 1/2
248	—	—	—	—	—	—	63248	—	63004-0248	—	2	16	51	406	2 1/2	15 1/2

Additional sizes available upon request.

N/A - Not Available



57/611 Series

1/2" Worm Drive Clamps

Standard worm drive band clamps are suitable for most common home and automotive repairs. The bands have clean punched rectangular perforations that hold strong and connect easily.

Ideal® 57 Series / Tridon® 611 Series

Stainless Steel and Plated Parts.
Screw: 5/16" hex slotted, plated carbon steel.
Band: 1/2" band width, 201/301 stainless steel.
Housing: 201/301 stainless steel.



67-1/625 Series

Ideal® 67-1 Series / Tridon® 625 Series

All Stainless Steel Parts.
Screw: 5/16" hex slotted, 410 stainless steel (Ideal), 305 stainless steel (Tridon).
Band: 1/2" band width, 201/301 stainless steel.
Housing: 201/301 stainless steel.
HSS Automotive Series.



67-5/620 Series

Ideal® 67-5 Series / Tridon® 620 Series

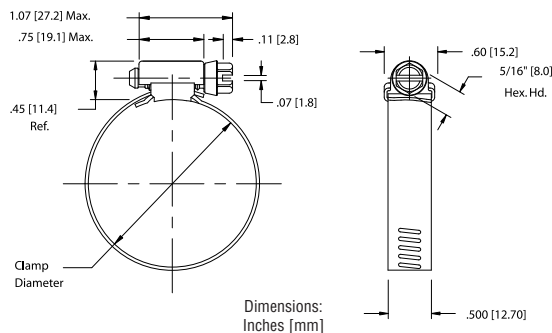
All High-Nickel Grade Stainless Steel.
Screw: 5/16" hex slotted, 305 stainless steel.
Band: 1/2" band width, 201/301 stainless steel.
Housing: 201/301 stainless steel with UPC shield.



67-4/620P Series

Ideal® 67-4 Series / Tridon® 620P Series

All 300 Series Marine Grade Stainless Steel.
Screw: 5/16" hex slotted, 305 stainless steel.
Band: 1/2" band width, 300 stainless steel.
Housing: 300 stainless steel with UPC shield.



Ideal® 67-6 Series / Tridon® 665 Series

All 316 Series Marine Grade Stainless Steel Parts.
Screw: 5/16" hex slotted, 316 stainless steel.
Band: 1/2" band width, 316 stainless steel.
Housing: 316 stainless steel.



67-6/665 Series



SAE Sizes	1/2" BAND CLAMPS										CLAMPING RANGE					
	Ideal Part No.	Tridon Part No.	Ideal Part No.	Tridon Part No.	Ideal Part No.	Tridon Part No.	Ideal Part No.	Tridon Part No.	Ideal Part No.	Tridon Part No.	Min. Dia. (in.)	Max. Dia. (in.)	Min. Dia. (mm)	Max. Dia. (mm)	Hose I.D. Min. (in.)	Hose I.D. Max. (in.)
	57	611	67-1	625	67-5	620	67-4	620P	67-6	665						
6	5706	611-006	6706-1	625-006	6706-5	620-006	67004-0006	620-P06	6706-6*	665-006*	3/8	7/8	10	22	5/16	3/8
8	5708	611-008	6708-1	625-008	6708-5	620-008	67004-0008	620-P08	6708-6*	665-008*	7/16	1	11	25	5/16	1/2
10	5710	611-010	6710-1	625-010	6710-5	620-010	67004-0010	620-P010	6710-6*	665-010*	1/2	1 1/16	13	27	3/8	5/8
12	5712	611-012	6712-1	625-012	6712-5	620-012	67004-0012	620-P012	6712-6*	665-012*	1/2	1 1/4	13	32	3/8	3/4
16	5716	611-016	6716-1	625-016	6716-5	620-016	67004-0016	620-P016	6716-6*	665-016*	11/16	1 1/2	18	38	3/4	7/8
20	5720	611-020	6720-1	625-020	6720-5	620-020	67004-0020	620-P020	6720-6*	665-020*	3/4	1 3/4	19	44	3/4	1 1/8
24	5724	611-024	6724-1	625-024	6724-5	620-024	67004-0024	620-P024	6724-6*	665-024*	1	2	25	51	7/8	1 3/8
28	5728	611-028	6728-1	625-028	6728-5	620-028	67004-0028	620-P028	6728-6*	665-028*	1 1/4	2 1/4	32	57	1 1/4	1 5/8
32	5732	611-032	6732-1	625-032	6732-5	620-032	67004-0032	620-P032	6732-6*	665-032*	1 1/2	2 1/2	38	63	1 1/2	1 7/8
36	5736	611-036	6736-1	625-036	6736-5	620-036	67004-0036	620-P036	6736-6*	665-036*	1 3/4	2 3/4	44	70	1 3/4	2
40	5740	611-040	6740-1	625-040	6740-5	620-040	67004-0040	620-P040	6740-6*	665-040*	2	3	51	76	2	2 1/4
44	5744	611-044	6744-1	625-044	6744-5	620-044	67004-0044	620-P044	6744-6*	665-044*	2 1/4	3 1/4	57	82	2 1/4	2 1/2
48	5748	611-048	6748-1	625-048	6748-5	620-048	67004-0048	620-P048	6748-6*	665-048*	2 1/2	3 1/2	64	89	2 1/2	2 3/4
52	5752	611-052	6752-1	625-052	6752-5	620-052	67004-0052	620-P052	6752-6*	665-052*	2 3/4	3 3/4	70	95	2 3/4	3
56	5756	611-056	6756-1	625-056	6756-5	620-056	67004-0056	620-P056	6756-6*	665-056*	3	4	76	101	3	3 1/2
60	5760	611-060	6760-1	625-060	6760-5	620-060	67004-0060	620-P060	—	665-060*	3 1/4	4 1/4	83	108	3 1/4	3 1/2
64	5764	611-064	6764-1	625-064	6764-5	620-064	67004-0064	620-P064	6764-6*	665-064*	2 1/2	4 1/2	64	114	2 1/2	4
72	5772	611-072	6772-1	625-072	6772-5	620-072	67004-0072	620-P072	6772-6*	665-072*	3	5	76	127	3	4 1/2
80	5780	611-080	6780-1	625-080	6780-5	620-080	67004-0080	620-P080	6780-6*	665-080*	3 1/2	5 1/2	89	140	3 1/2	5
88	5788	611-088	6788-1	625-088	6788-5	620-088	67004-0088	620-P088	6788-6*	665-088*	4	6	102	152	4	5 1/2
96	5796	611-096	6796-1	625-096	6796-5	620-096	67004-0096	620-P096	6796-6*	665-096*	4 1/2	6 1/2	114	165	4 1/2	6
104	57104	611-104	67104-1	625-104	67104-5	620-104	67004-0104	620-P104	67104-6*	665-104*	5	7	127	178	5	6 1/2

Additional sizes available upon request. *Lead times vary.

Miniature Micro-Gear® Clamps

Micro-Gear® clamps are tiny, tough and precision engineered for use in such small hose applications as emission control, fuel lines and vacuum hoses. Their slim, 5/16" band and low profile housing make them easy to install in confined areas.

62P / 325 Series



Ideal® 62P Series / Tridon® 325 Series

Screw: 1/4" hex-head, plated carbon steel.
Band: 5/16" band width, 201/301 stainless steel.
Housing: Low profile, 201/301 stainless steel.

350 Series



Tridon® 350 Series

Screw: 1/4" hex-head, 410 plated steel.
Band: 5/16" band width, 201/301 stainless steel.
Housing: Low profile, 201/301 stainless steel.
MAH Automotive Series.

Ideal® 62M Series / Tridon® 345 Series

Screw: 1/4" hex slotted, 300 stainless steel.
Band: 5/16" band width, 300 stainless steel.
Housing: Low profile, 300 stainless steel.

62M / 345 Series

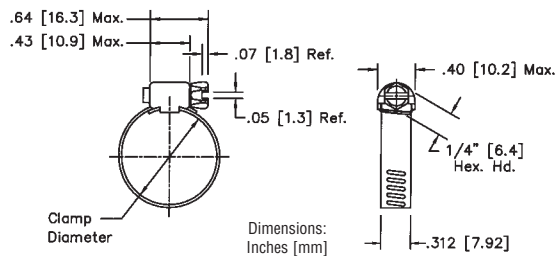


Ideal® 62J Series / Tridon® 359 Series

Screw: 1/4" hex slotted, 316 stainless steel.
Band: 5/16" band width, 316 stainless steel.
Housing: Low profile, 316 stainless steel.

316
STAINLESS STEEL

62J / 359 Series



Miniature Micro-Gear® Clamps

MICRO-GEAR CLAMPS									CLAMPING RANGE					
SAE Sizes	Ideal Part No.	Tridon Part No.	Ideal Part No.	Tridon Part No.	Ideal Part No.	Tridon Part No.	Ideal Part No.	Tridon Part No.	Min. Dia. (in.)	Max. Dia. (in.)	Min. Dia. (mm)	Max. Dia. (mm)	Hose I.D. Min. (in.)	Hose I.D. Max. (in.)
	62P	325	N/A	350	62M	345	62J	359						
04	6204 ⁽¹⁾	325-004	—	350-004	62604 ⁽³⁾	345-004	62J04	359-004*	1/4	5/8	6	16	1/8	5/16
05	62P05	325-005	—	350-005	62M05	345-005	—	—	7/16	11/16	7	17	1/8	3/8
06	6206 ⁽²⁾	325-006	—	350-006	62606	345-006	62J06	359-006*	5/16	7/8	8	22	1/4	7/16
08	62P08	325-008	—	350-008	62M08	345-008	62J08	—	3/8	1	10	25	5/16	1/2
10	62P10	325-010	—	350-010	62M10	345-010	62J10	—	3/8	1 1/16	10	27	5/16	5/8
12	62P12	325-012	—	350-012	62M12	345-012	—	—	1/2	1 1/4	13	32	5/8	3/4
16	62P16	325-016	—	350-016	62M16	345-016	—	—	1/2	1 1/2	13	38	5/8	1
20	62P20	325-020	—	350-020	62M20	345-020	—	—	3/4	1 3/4	19	44	1	1 1/4
24	62P24	325-024	—	350-024	62M24	345-024	—	—	1	2	26	51	1 1/4	1 1/2
28	62P28	325-028	—	350-028	62M28	345-028	—	—	1 1/4	2 1/4	32	57	1 1/2	1 3/4
30	62P30	325-030	—	350-030	62M30	345-030	—	—	1 3/8	2 3/8	35	60	1 5/8	1 7/8
32	62P32	325-032	—	350-032	62M32	345-032	—	—	1 1/2	2 1/2	38	63	1 3/4	2
36	62P36	325-036	—	350-036	62M36	345-036	—	—	1 3/4	2 3/4	45	70	2	2 1/4
44	62P44	325-044	—	350-044	62M44	345-044	—	—	2 1/4	3 1/4	57	82	2 1/4	2 3/4
48	62P48	325-048	—	350-048	62M48	345-048	—	—	2 1/2	3 1/2	64	89	2 1/2	3

(1) Old part no. 6202 (2) Old part no. 6203 (3) Old part no. 62602 * Lead times vary Additional sizes available upon request.

N/A - Not Available

Fuel Injection Clamps

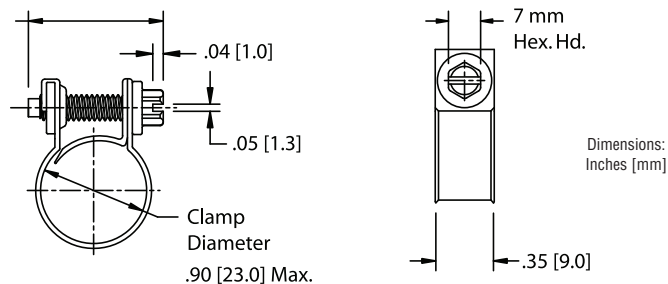
Fuel injection clamps are designed to provide the uniform sealing pressure required on fuel injection hoses. They feature a solid band with rolled edges and a special nut and bolt design.

Ideal® 52F Series / Tridon® Automotive F.I. 905 Series

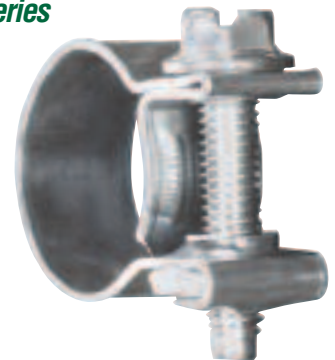
Screw: 7mm hex slotted, clear zinc-plated carbon steel.

Band: 9mm band width, clear zinc-plated carbon steel.

SIZE			CLAMPING RANGE				
SAE Sizes	Ideal Part No.	Tridon Part No.	Min. Dia. (mm)	Max. Dia. (mm)	Min. Dia. (in.)	Max. Dia. (in.)	Hose I.D.
4	52F13	905-004	11	13	7/16	1/2	1/4
6	52F15	905-006	13	15	1/2	9/16	5/16
8	52F16	905-008	14	16	9/16	5/8	3/8

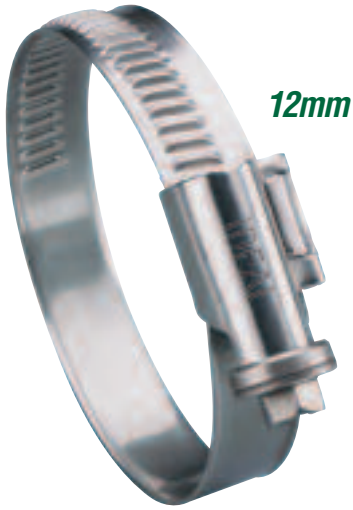


52F / 905 Series

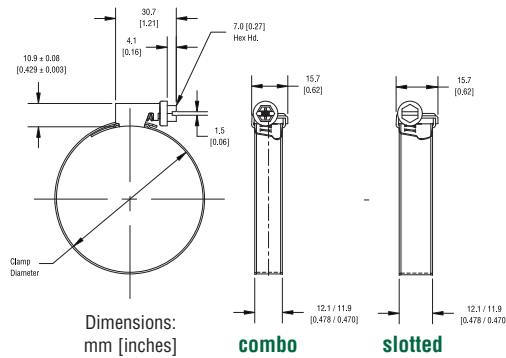


Non-Perforated Worm Drive Clamps

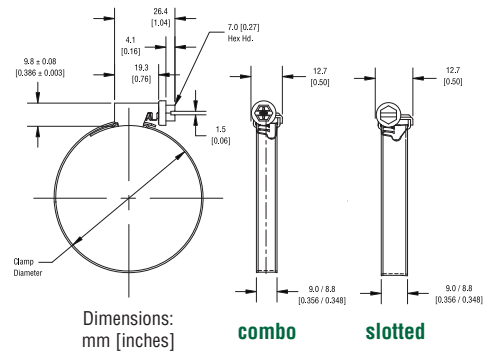
IDEAL Series	TRIDON Series	Band Width	Material Composition	Screw Size and Description
53402	142	12 mm Band Width	W2	7 mm screw hex-head combo slotted
53403	143	12 mm Band Width	W3	7 mm screw hex-head slotted
53404	144	12 mm Band Width	W4	7 mm screw hex-head slotted
53406	145	12 mm Band Width	W5	7 mm screw hex-head slotted
53302	132	9 mm Band Width	W2	7 mm screw hex-head combo slotted
53303	133	9 mm Band Width	W3	7 mm screw hex-head slotted
53304	134	9 mm Band Width	W4	7 mm screw hex-head slotted
53305	135	9 mm Band Width	W5	7 mm screw hex-head slotted
53202	122	7.5 mm Band Width	W2	6 mm screw hex-head combo slotted



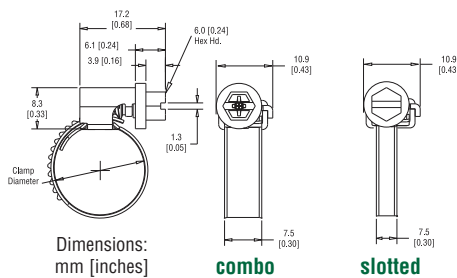
12mm Band



9mm Band



7.5mm Band



	Corrosion Resistance	Common Uses	Band	Screw	Housing
W2	Average requirements	Cars, trucks, some mechanical engineering	AISI 430 Stainless Steel, Chrome-Steel	Plated Mild Steel or Plated Carbon Steel	AISI 430 Stainless Steel, Chrome-Steel
W3	Medium requirements	Automotive OE	AISI 430 Stainless Steel, Chrome-Steel	AISI 430 Stainless Steel, Chrome-Steel	AISI 430 Stainless Steel, Chrome-Steel
W4	High requirements. Low magnetic permeability	For critical connections in cars such as petrol pipes, close to critical and electronic circuits, top grade mechanical engineering, agricultural machinery, motorbikes, signs, general outdoors, stainless steel chimneys	AISI 304 Stainless Steel, Nickel-Chrome Steel, Austenitic Steel, Shiny and Durable	AISI 304 Stainless Steel, Nickel-Chrome Steel, Austenitic Steel, Shiny and Durable	AISI 304 Stainless Steel, Nickel-Chrome Steel, Austenitic Steel, Shiny and Durable
W5	Maximum requirements. Salt water resistant. Low magnetic permeability	Close to critical and electronic circuits, shipbuilding, defense technology, food processing, sewage treatment facilities, chemical and mechanical engineering	AISI 316 Stainless Steel, Chrome-Molybdenum Steel, Austenitic	AISI 316 Stainless Steel, Chrome-Molybdenum Steel, Austenitic	AISI 316 Stainless Steel, Chrome-Molybdenum Steel, Austenitic

Features & Benefits*

IDEAL stamp on housing for a name you can trust

Cross saddle for more even support on installation and long-term band tension

Smooth inside band protects soft hoses against shearing and fray



Unique screw design and asymmetric housing provides improved housing roll-resistance and uniform sealing strength

Material spec and clamping range stamped on band to aid identification

***Meets or exceeds
DIN 3017 standard**

See chart on pg. 12 for specs and dimension information

Non-Perforated Worm Drive Clamps

Band Width	IDEAL Part No. W2	TRIDON Part No. W2	IDEAL Part No. W3	TRIDON Part No. W3	IDEAL Part No. W4	TRIDON Part No. W4	IDEAL Part No. W5	TRIDON Part No. W5	Clamping Range		Torque Performance			
	Series-Size	Series-Size	Series-Size	Series-Size	Series-Size	Series-Size	Series-Size	Series-Size	Diameter Min-Max (mm)	Diameter Min-Max (in.)	Installation (in-lbs) (NM)		Ultimate (Min) (in-lbs) (NM)	
7.5mm	53202-0012	122-012	—	—	—	—	—	—	8-12	5/16 - 15/32	15	1.7	28	3.2
	53202-0016	122-016	—	—	—	—	—	—	10-16	13/32 - 5/8	15	1.7	28	3.2
	53202-0018	122-018	—	—	—	—	—	—	12-18	15/32 - 11/16	15	1.7	28	3.2
9mm	53302-0012	132-012	53303-0012	133-012	53304-0012	134-012	53305-0012	135-012	8-12	5/16 - 15/32	18.0	2.0	35	4.0
	53302-0016	132-016	53303-0016	133-016	53304-0016	134-016	53305-0016	135-016	8-16	5/16 - 5/8	18.0	2.0	35	4.0
	53302-0020	132-020	53303-0020	133-020	53304-0020	134-020	53305-0020	135-020	12-20	15/32 - 25/32	26.0	3.0	40	4.5
	53302-0022	132-022	53303-0022	133-022	53304-0022	134-022	53305-0022	135-022	12-22	15/32 - 7/8	26.0	3.0	40	4.5
	53302-0027	132-027	53303-0027	133-027	53304-0027	134-027	53305-0027	135-027	16-27	5/8 - 1 1/16	26.0	3.0	40	4.5
	53302-0032	132-032	53303-0032	133-032	53304-0032	134-032	53305-0032	135-032	20-32	25/32 - 1 1/4	26.0	3.0	40	4.5
	53302-0040	132-040	53303-0040	133-040	53304-0040	134-040	53305-0040	135-040	25-40	1 - 1 9/16	26.0	3.0	40	4.5
	53302-0045	132-045	53303-0045	133-045	53304-0045	134-045	53305-0045	135-045	30-45	1 3/16 - 1 3/4	26.0	3.0	40	4.5
	53302-0050	132-050	53303-0050	133-050	53304-0050	134-050	53305-0050	135-050	32-50	1 1/4 - 1 31/32	26.0	3.0	40	4.5
	53302-0060	132-060	53303-0060	133-060	53304-0060	134-060	53305-0060	135-060	40-60	1 9/16 - 2 3/8	26.0	3.0	40	4.5
	53302-0070	132-070	53303-0070	133-070	53304-0070	134-070	53305-0070	135-070	50-70	1 31/32 - 2 3/4	26.0	3.0	40	4.5
	53302-0080	132-080	53303-0080	133-080	53304-0080	134-080	53305-0080	135-080	60-80	2 3/8 - 3 1/8	26.0	3.0	40	4.5
	53302-0090	132-090	53303-0090	133-090	53304-0090	134-090	53305-0090	135-090	70-90	2 3/4 - 3 1/2	26.0	3.0	40	4.5
	53302-0100	132-100	53303-0100	133-100	53304-0100	134-100	53305-0100	135-100	80-100	3 1/8 - 3 15/16	26.0	3.0	40	4.5
	53302-0110	132-110	53303-0110	133-110	53304-0110	134-110	53305-0110	135-110	90-110	3 1/2 - 4 5/16	26.0	3.0	40	4.5
	53302-0120	132-120	53303-0120	133-120	53304-0120	134-120	53305-0120	135-120	100-120	3 5/16 - 4 23/32	26.0	3.0	40	4.5
	53302-0130	132-130	53303-0130	133-130	53304-0130	134-130	53305-0130	135-130	110-130	4 5/16 - 5 1/8	26.0	3.0	40	4.5
	53302-0140	132-140	53303-0140	133-140	53304-0140	134-140	53305-0140	135-140	120-140	4 23/32 - 5 1/2	26.0	3.0	40	4.5
53302-0150	132-150	53303-0150	133-150	53304-0150	134-150	53305-0150	135-150	130-150	5 1/8 - 5 29/32	26.0	3.0	40	4.5	
53302-0160	132-160	53303-0160	133-160	53304-0160	134-160	53305-0160	135-160	140-160	5 1/2 - 6 5/16	26.0	3.0	40	4.5	
12mm	53402-0027	142-027	53403-0027	143-027	53404-0027	144-027	53405-0027	145-027	16-27	5/8 - 1 1/16	44	5.0	71	8.0
	53402-0032	142-032	53403-0032	143-032	53404-0032	144-032	53405-0032	145-032	20-32	25/32 - 1 1/4	44	5.0	73	8.3
	53402-0040	142-040	53403-0040	143-040	53404-0040	144-040	53405-0040	145-040	25-40	1 - 1 9/16	44	5.0	73	8.3
	53402-0045	142-045	53403-0045	143-045	53404-0045	144-045	53405-0045	145-045	30-45	1 3/16 - 1 3/4	44	5.0	73	8.3
	53402-0050	142-050	53403-0050	143-050	53404-0050	144-050	53405-0050	145-050	32-50	1 1/4 - 1 31/32	44	5.0	73	8.3
	53402-0060	142-060	53403-0060	143-060	53404-0060	144-060	53405-0060	145-060	40-60	1 9/16 - 2 3/8	44	5.0	73	8.3
	53402-0065	142-065	53403-0065	143-065	53404-0065	—	53405-0065	145-065	45-65	1 3/4 - 2 1/2	44	5.0	73	8.3
	53402-0070	142-070	53403-0070	143-070	53404-0070	144-070	53405-0070	145-070	50-70	1 31/32 - 2 3/4	44	5.0	73	8.3
	53402-0075	142-075	53403-0075	143-075	53404-0075	144-075	53405-0075	145-075	55-75	2 3/16 - 2 15/16	44	5.0	73	8.3
	53402-0080	142-080	53403-0080	143-080	53404-0080	144-080	53405-0080	145-080	60-80	2 3/8 - 3 1/8	44	5.0	73	8.3
	53402-0090	142-090	53403-0090	143-090	53404-0090	144-090	53405-0090	145-090	70-90	2 3/4 - 3 1/2	44	5.0	73	8.3
	53402-0100	142-100	53403-0100	143-100	53404-0100	144-100	53405-0100	145-100	80-100	3 1/8 - 3 15/16	44	5.0	73	8.3
	53402-0110	142-110	53403-0110	143-110	53404-0110	144-110	53405-0110	145-110	90-110	3 1/2 - 4 5/16	44	5.0	73	8.3
	53402-0120	142-120	53403-0120	143-120	53404-0120	144-120	53405-0120	145-120	100-120	3 5/16 - 4 23/32	44	5.0	73	8.3
	53402-0130	142-130	53403-0130	143-130	53404-0130	144-130	53405-0130	145-130	110-130	4 5/16 - 5 1/8	44	5.0	73	8.3
	53402-0140	142-140	53403-0140	143-140	53404-0140	144-140	53405-0140	145-140	120-140	4 23/32 - 5 1/2	44	5.0	73	8.3
	53402-0150	142-150	53403-0150	143-150	53404-0150	144-150	53405-0150	145-150	130-150	5 1/8 - 5 29/32	44	5.0	73	8.3
	53402-0160	142-160	53403-0160	143-160	53404-0160	144-160	53405-0160	145-160	140-160	5 1/2 - 6 5/16	44	5.0	73	8.3
53402-0170	142-170	53403-0170	143-170	—	—	—	—	150-170	5 29/32 - 6 11/16	N/A	N/A	N/A	N/A	
53402-0180	142-180	53403-0180	143-180	—	—	—	—	160-180	6 5/16 - 7 3/32	N/A	N/A	N/A	N/A	
53402-0200	142-200	53403-0200	143-200	—	—	—	—	180-200	7 3/32 - 7 7/8	N/A	N/A	N/A	N/A	

Lined Clamps

Lined clamps are designed for use with silicone rubber and other soft hose applications. The liner protects the hose surface and prevents it from extruding or shearing through the band notches as the clamp is tightened.

Ideal® 53 Series / Tridon® 613 Series (ET)

Stainless Steel and Plated Parts.

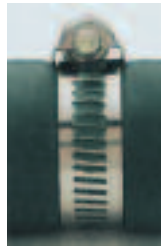
Screw: 5/16" hex slotted, plated carbon steel.

Band: 1/2" band width, 201/301 stainless steel.

Housing: 201/301 stainless steel.

Liner: 201/301 stainless steel.

Hose installed with unlined clamp



Hose installed with lined clamp



Ideal® 65E Series / Tridon® 615 Series

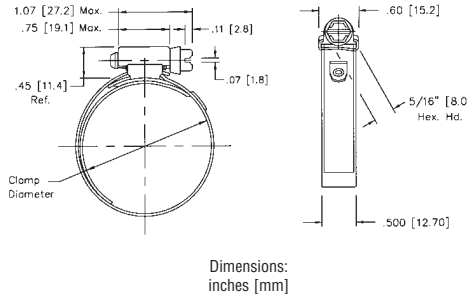
All 300 Stainless Steel Parts. (Ideal) Marine Grade Stainless Steel. (Ideal)

Screw: 5/16" hex slotted. 300 stainless steel.

Band: 9/16" band width (Ideal) or 1/2" band width (Tridon), 300 stainless steel.

Housing: 300 stainless steel. (Ideal) 201 Stainless Steel. (Tridon)

Liner: 300 stainless steel.



Ideal® 67M Series

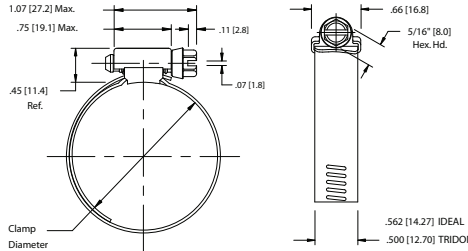
All 316 Stainless Steel Parts. Marine Grade Stainless Steel.

Screw: 5/16" hex slotted. 316 stainless steel.

Band: 9/16" band width. 316 stainless steel.

Housing: 316 stainless steel.

Liner: 316 stainless steel.



53/613 Series



65E/615 Series



67M Series



LINED CLAMPS							CLAMPING RANGE					
SAE Sizes	Ideal Part No.	Tridon Part No.	Ideal Part No.	Tridon Part No.	Ideal Part No.	Tridon Part No.	Min. Dia. (in.)	Max. Dia. (in.)	Min. Dia. (mm)	Max. Dia. (mm)	Hose I.D. Min. (in.)	Hose I.D. Max. (in.)
	53	613	65-E	615	67M	N/A						
6	5306	613-006	6506E	615-006*	—	—	5/8	7/8	16	22	—	3/8
8	5308	613-008	6508E	615-008*	6708M	—	5/8	1	16	25	—	1/2
10	5310	613-010	6510E	615-010*	6710M	—	3/4	1 1/16	19	27	—	5/8
12	5312	613-012	6512E	615-012*	6712M	—	7/8	1 1/4	22	32	—	3/4
16	5316	613-016	6516E	615-016*	6716M	—	1	1 1/2	26	38	3/4	1
20	5320	613-020	6520E	615-020*	6720M	—	1 1/8	1 3/4	29	44	7/8	1 1/4
24	5324	613-024	6524E	615-024*	6724M	—	1 1/4	2	32	51	1	1 1/2
28	5328	613-028	6528E	615-028*	6728M	—	1 5/16	2 1/4	33	57	1 1/8	1 3/4
32	5332	613-032	6532E	615-032*	6732M	—	1 9/16	2 1/2	40	63	1 1/4	2
36	5336	613-036	6536E	615-036*	6736M	—	1 13/16	2 3/4	46	70	1 1/2	2 1/4
40	5340	613-040	6540E	615-040*	6740M	—	2 1/16	3	52	76	1 3/4	2 1/2
44	5344	613-044	6544E	615-044*	6744M	—	2 5/16	3 1/4	59	82	2 1/8	2 3/4
48	5348	613-048	6548E	615-048*	6748M	—	2 9/16	3 1/2	65	89	2 1/4	3
52	5352	613-052*	6552E	615-052*	6752M	—	2 13/16	3 3/4	72	95	2 1/2	3 1/4
56	5356	613-056*	6556E	615-056*	6756M	—	3 1/16	4	78	101	2 3/4	3 1/2
60	5360	613-060*	6560E	615-060*	6760M	—	3 9/16	4 1/4	84	108	3 1/8	3 3/4
64	5364	613-064*	6564E	615-064*	6764M	—	4 1/2	4 1/2	91	114	3 1/4	4
72	5372	613-072*	6572E	615-072*	6772M	—	5	5	103	127	3 3/4	4 1/2

Additional sizes available upon request. *Lead times vary.

We recommend a minimum of all 300 grade stainless steel clamps for marine applications. For applications directly over galvanized steel, we recommend an intermediate layer of non-conductive material such as vinyl electrical tape.



56/500 Series



58/550 Series

Snaplock® Quick Release Clamps

Snaplock® quick release worm drive clamps are good for closed system applications where the clamp must be disengaged to be applied. The swivel-action locking of screw to band makes installation and removal much faster.

Ideal® 56 Series

Screw: 5/16" hex slotted, plated carbon steel.
Band: 9/16" band width, 201/301 stainless steel.
Housing: 201/301 stainless steel.
Bridge: Plated carbon steel

Ideal® 58 Series

Screw: 3/8" hex combo slotted, 410 stainless steel.
Band: 9/16" band width, 201/301 stainless steel.
Housing: 201/301 stainless steel.
Bridge: 410 stainless steel.

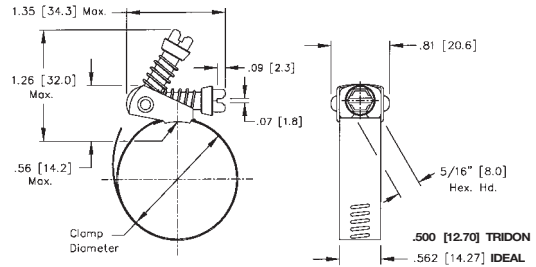
Tridon® 500 Series

Screw: 5/16" hex slotted, plated carbon steel.
Band: 1/2" band width, 201/301 stainless steel.
Housing: 201/301 stainless steel.
Bridge: 410 stainless steel.

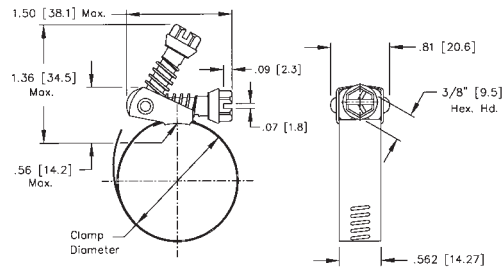
Tridon® 550 Series

Screw: 5/16" hex slotted, 410 stainless steel.
Band: 1/2" band width, 201/301 stainless steel.
Housing: 201/301 stainless steel.
Bridge: 410 stainless steel.

5/16" Hex Head



3/8" Hex Head



SNAPLOCK QUICK RELEASE					CLAMPING RANGE					
SAE Sizes	Ideal Part No.	Tridon Part No.	Ideal Part No.	Tridon Part No.	Min. Dia. (in.)	Max. Dia. (in.)	Min. Dia. (mm)	Max. Dia. (mm)	Hose I.D. Min. (in.)	Hose I.D. Max. (in.)
	56	500	58	550						
12	5612	500-012*	5812	550-012*	1/2	1 1/4	13	32	3/8	3/4
20	5620	500-020*	5820	550-020*	3/4	1 3/4	19	44	3/4	1 1/8
24	5624	500-024*	5824	550-024*	1	2	26	51	7/8	1 3/8
28	5628	500-028*	5828	550-028*	1	2 1/4	26	57	7/8	1 5/8
36	5636	500-036*	5836	550-036*	1	2 3/4	26	70	7/8	2
48	5648	500-048*	5848	550-048*	1 1/2	3 1/2	38	89	1 1/2	2 3/4
56	5656	500-056	5856	550-056	1	4	26	101	7/8	3 1/2
72	5672	500-072	5872	550-072	2	5	51	127	2	4 1/2
88	5688	500-088	5888	550-088	2	6	51	152	2	5 1/2
104	56104	500-104	58104	550-104	2 7/8	7	45	178	1 3/4	6 1/2
116	56116	500-116*	58116	550-116*	1 3/4	7 3/4	45	197	1 3/4	7
128	56128	500-128	58128	550-128	2 1/4	8 1/2	45	216	1 3/4	7 1/2
136	56136	500-136*	58136	550-136	1 3/4	9	45	228	1 3/4	8 1/2
152	56152	500-152	58152	550-152	2	10	51	254	2	9 1/2
188	56188	500-188	58188	550-188	2	12 1/4	51	311	2	11 1/2

Clamps are shipped disengaged. Information on special sizes available on request. *Lead times may vary.

Two-Piece Snaplock® Clamps

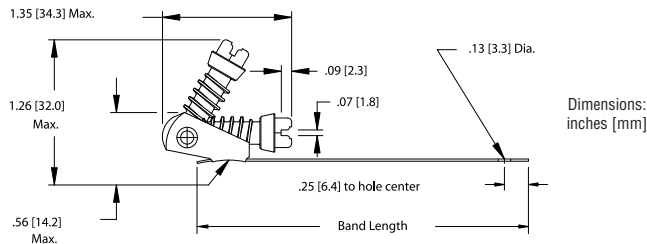
This unique two-part clamp is adaptable to a variety of latching or locking applications where repeated opening and closing is necessary. Holes in the end of each part allow for permanent installation of clamp with rivets or screws.

Part 1

Ideal® 58 (2-pc)/ Tridon® 502 Series

Screw: 5/16" hex-head slotted, plated carbon steel.

Housing: Stainless steel.



HOUSING and SCREW					
Ideal Part No.	Tridon Part No.	Band Length		Hole Diameter	
58 (2-pc) Series	502 Series	Inches	mm	Inches	mm
5823	502-002	1.86	47.2	0.13	3.3
5825	502-003	1.50	38.1	0.13	3.3
5829	502-004	3.72	94.5	0.13	3.3
5830	502-005	3.63	92.1	0.25	6.4

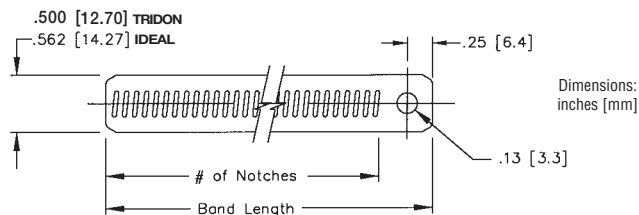
Part 2

Ideal® 62 (2-pc) Series

Band: 9/16" band width, 201/301 stainless steel.

Tridon® 503 Series

Band: 1/2" band width, 201/301 stainless steel.



BAND					
Ideal Part No.	Tridon Part No.	Band Length		Hole Diameter	
62 (2-pc) Series	503 Series	Inches	mm	Inches	mm
62647	503-002	4.81	122.2	0.13	3.3
62648	503-003	3.88	98.4	0.13	3.3
62649	503-004	6.50	165.1	0.13	3.3
62650	503-005	4.75	120.7	0.13	3.3
62654	503-006	10.06	255.6	0.13	3.3
62655	503-007	2.00	50.8	0.13	3.3
62656	503-008	6.00	152.4	0.25	6.4

Also available in all zinc-plated, carbon steel. Contact Ideal for details.

58/502 Series (Part 1)



58/502 Series (Part 2)

Surelock Quick Engage Clamps

Surelock Quick Engage worm drive clamps have a bind-free, pull-through design for fast installation. Captured screw design for quick fastening and trouble-free tensioning. Extended housing embraces 25% more screw threads than competitive designs.

48 Series



Ideal® 48 Series

All 300 Marine Grade Stainless Steel.

Screw: 5/16" hex slotted, 300 stainless steel.

Band: 9/16" band width, 300 stainless steel.

Housing: Extended, 300 stainless steel.

49 Series



Ideal® 49 Series

All 316 Marine Grade Stainless Steel.

Screw: 5/16" hex slotted, 316 stainless steel.

Band: 9/16" band width, 316 stainless steel.

Housing: Extended, 316 stainless steel.

54 Series



Combo-Hex® Clamps

Combo-Hex® clamps are the clamps professional mechanics choose most often. Particularly helpful in hard-to-reach areas, they feature an exclusive, safety-collared, deep-slotted screw design that prevents screwdrivers from slipping and puncturing the hose wall. Combo-Hex clamps can be installed with a screwdriver, nutdriver or socket wrench.

Ideal® 54 Series

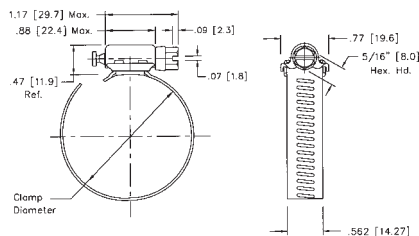
Stainless Steel and Plated Parts.
Screw: 3/8" safety-collared, hex, deep-slotted, plated carbon steel.
Band: 9/16" band width. 201/301 stainless steel.
Housing: 201/301 stainless steel.

SURELOCK			CLAMPING RANGE					
SAE Sizes	Ideal Part No.	Ideal Part No.	Min. Dia. (in.)	Max. Dia. (in.)	Min. Dia. (mm)	Max. Dia. (mm)	Hose I.D. Min. (in.)	Hose I.D. Max. (in.)
	48	49						
12	4812	4912*	1/2	1 1/4	13	32	3/8	3/4
20	4820	4920	3/4	1 3/4	19	44	3/4	1 1/8
24	4824	4924*	3/4	2	19	51	3/4	1 3/8
28	4828	4928*	1	2 1/4	26	57	7/8	1 5/8
32	4832	4932*	1	2 1/2	26	63	7/8	1 7/8
36	4836	4936*	7/8	2 3/4	22	70	3/4	2
48	4848	4948*	1	3 1/2	26	89	1	2 3/4
56	4856	4956*	1	4	26	101	1	3 1/2
72	4872	4972*	2	5	51	127	2	4 1/2
80	4880	4980*	2 9/16	5 1/2	65	140	2 1/2	5
88	4888	4988*	2	6	51	152	2	5 1/2
104	48104	49104*	2	7	51	178	2	6 1/2
116	48116	49116*	1 3/4	7 3/4	44	197	1 3/4	7
128	48128	49128*	4 1/4	8 1/2	108	216	4 1/4	8
152	48152	49152*	4	10	102	254	4	9 1/2
180	48180	49180*	7 3/4	11 3/4	197	298	7 1/2	11
188	48188	49188*	6 1/4	12 1/4	159	311	6	11 1/2

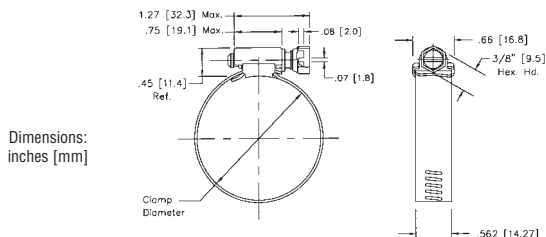
Additional sizes available upon request. *Lead times may vary.

COMBO-HEX		CLAMPING RANGE					
SAE Sizes	Ideal Part No.	Min. Dia. (in.)	Max. Dia. (in.)	Min. Dia. (mm)	Max. Dia. (mm)	Hose I.D. Min. (in.)	Hose I.D. Max. (in.)
	54						
6	5406	3/8	7/8	10	22	5/16	3/8
8	5408	7/16	1	11	25	5/16	1/2
10	5410	1/2	1 1/16	13	27	3/8	5/8
12	5412	1/2	1 1/4	13	32	3/8	3/4
16	5416	11/16	1 1/2	18	38	3/4	7/8
20	5420	3/4	1 3/4	19	44	3/4	1 1/8
24	5424	1	2	25	51	7/8	1 3/8
28	5428	1 1/4	2 1/4	32	57	1 1/4	1 5/8
32	5432	1 1/2	2 1/2	38	63	1 1/2	1 7/8
36	5436	1 3/4	2 3/4	44	70	1 3/4	2
40	5440	2	3	51	76	2	2 1/4
44	5444	2 1/4	3 1/4	57	82	2 1/4	2 1/2
48	5448	2 1/2	3 1/2	64	89	2 1/4	2 3/4
52	5452	2 3/4	3 3/4	70	95	2 3/4	3
56	5456	3	4	76	101	3	3 1/2

Surelock



Combo Hex



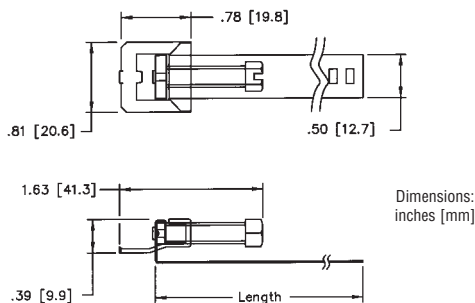
Lox-On® Clamps

For extra-tough installations. Unique design provides double-locking security and high band tension for high sealing pressures.



Ideal® 69 Series

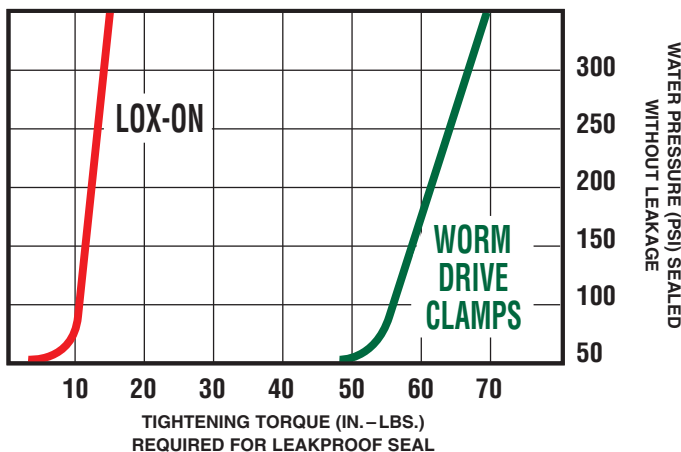
All 300 Series Marine Grade Stainless Steel.
Screw: 5/16" hex slotted, 300 stainless steel.
Band: 9/16 band width, 300 stainless steel, with UPC shield.
Housing: Double locking, 300 stainless steel.



LOX-ON		CLAMPING RANGE					
SAE Sizes	Ideal Part No.	Min. Dia. (in.)	Max. Dia. (in.)	Min. Dia. (mm)	Max. Dia. (mm)	Band Length (in.)	Band Length (mm)
	69						
12	6912	11/16	1 1/4	17	32	4 13/16	122
20	6920	11/16	1 3/4	17	44	6 13/32	163
32	6932	11/16	2 5/8	17	67	8 29/32	226
72	6972	1 3/4	5	44	127	16 5/16	414
104	69104	4	7 1/4	102	184	23 5/16	592

Simplified inventory – just one size No. 6932, will handle from 1/2" through 2" pipe. Lox-On ships flat and disengaged – It's easy to stock, easy to store.

LOX-ON SAFETY MARGIN

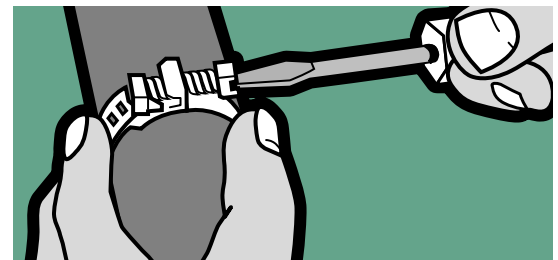


We recommend a minimum of all 300 grade stainless steel clamps for marine applications. For applications directly over galvanized steel, we recommend an intermediate layer of non-conductive material such as vinyl electrical tape.

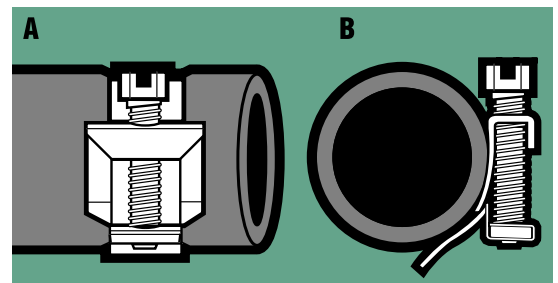
69 Series



Insert band through buckle from underneath. Pull band snug about pipe and engage serration of band on inner lug.



Bend band at 90° from buckle and engage outer tooth with serration. Hold band down and tighten screw.



A. Illustrates Lox-On compression at only 20 in.-lbs. tightening torque on 160 PSI (high-density) polyethylene pipe. This is half the torque generally applied to conventional worm drive clamps.

B. Patented, offset buckle provides full circle seal. Lox-On conforms to the contour of the pipe.

IDEAL® Turn-Key® Clamps

Innovative design installs with a simple hand twist, no tools required. It's easy to remove and replace. Pull off the screw cap for a tamper-resistant connection.

Common Applications by Size

Automotive Hose Clamps: Heater = SAE sizes No. 12 or 20

Radiator = SAE sizes No. 28 or 36

Garden Hose Clamps: SAE size No. 12

R.V. Sewer Hose Clamps: SAE size No. 48

Dryer Vent Hose Clamps: SAE size No. 64

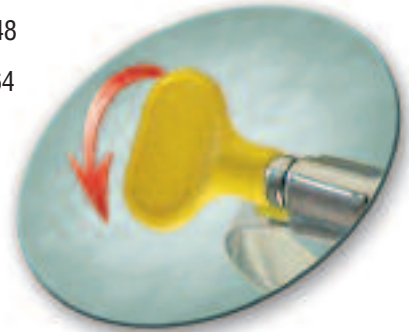
Material Specifications

Injection molded thermoplastic screw cap, removable and reusable.

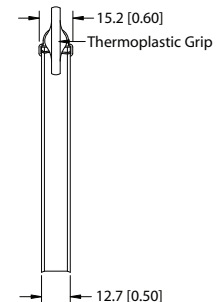
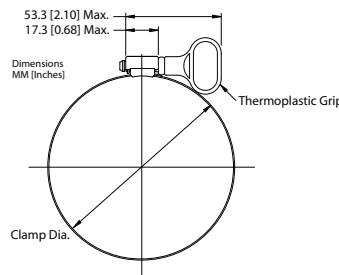
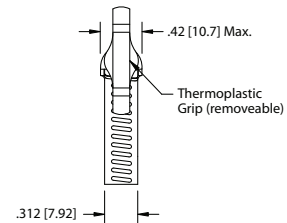
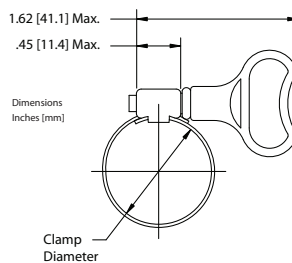
Screw: Plated carbon steel.

Band: 1/2" band width, stainless steel.

Housing: Stainless steel.



TURN-KEY			CLAMPING RANGE			
Part No.	SAE Sizes	Color	Min. Dia. (in.)	Max. Dia. (in.)	Min. Dia. (mm)	Max. Dia. (mm)
6Y004	Mini size 4	Yellow	1/4	5/8	6	16
6Y006	Mini size 6	Yellow	3/8	7/8	10	22
5Y012	12	Yellow	1/2	1 1/4	13	32
5Y020	20	Yellow	3/4	1 3/4	19	44
5Y028	28	Yellow	1 1/4	2 1/4	32	57
5Y036	36	Yellow	1 3/4	2 3/4	44	70
5Y048	48	Yellow	2 1/2	3 1/2	64	114
5Y064	64	Yellow	2 1/2	3 1/2	64	114

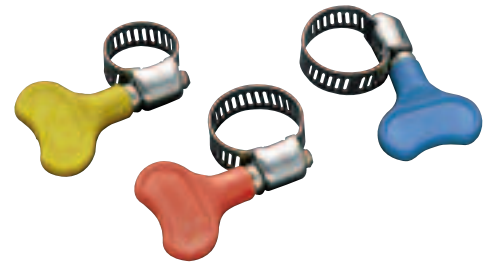


TURN-KEY VISI-PAKS		
Part No.	Assortment in Visi-Pak™	Color
6Y004v	Mini 4 and Mini 6	Yellow
6R004v	Mini 4 and Mini 6	Red
6B004v	Mini 4 and Mini 6	Blue
5Y012v	Two 12's	Yellow
5R012v	Two 12's	Red
5B012v	Two 12's	Blue
5Y020v	Two 20's	Yellow
5R020v	Two 20's	Red
5B020v	Two 20's	Blue
5Y028v	Two 28's	Yellow
5R028v	Two 28's	Red
5B028v	Two 28's	Blue
5Y036v	Two 36's	Yellow
5R036v	Two 36's	Red
5B036v	Two 36's	Blue
5Y048v*	Two 48's	Yellow
5Y064v**	Two 64's	Yellow
5Y001v	Six, Sizes 4-36	Yellow
5R001v	Six, Sizes 4-36	Red
5B001v	Six, Sizes 4-36	Blue
9048Y***	Fifty, 48's	Yellow

* RV Sewer Hose Packaging

** Dryer Vent Packaging

*** RV Sewer Hose Bucket of Clamps



We recommend a minimum of all 300 grade stainless steel clamps for marine applications. For applications directly over galvanized steel, we recommend an intermediate layer of non-conductive material such as vinyl electrical tape.



59 Series

IDEAL® Wraplock® Clamps

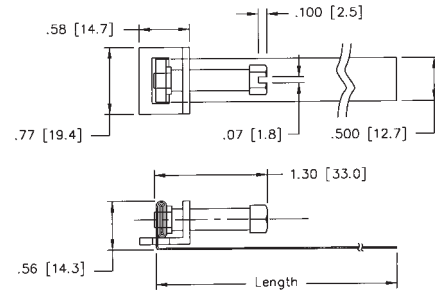
Retaining clamp conforms to any shape. Made in one piece.

Ideal® 59 Series

Screw: 5/16" hex, plated steel.

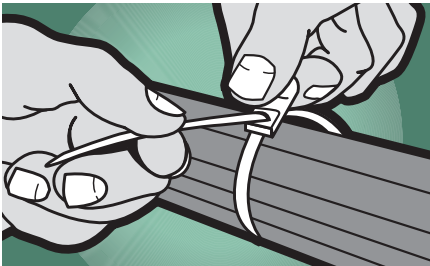
Band: 1/2" band width, galvanized steel.

Buckle: Plated steel.



WRAPLOCK		CLAMPING RANGE					
SAE Sizes	Ideal Part No.	Min. Dia. (in.)	Max. Dia. (in.)	Min. Dia. (mm)	Max. Dia. (mm)	Band Length (in.)	Band Length (mm)
	59						
12	5912	1	3 1/2	25	89	12	305
15	5915	1	4 1/2	25	114	15	381
18	5918	1	5	25	127	18	457
24	5924	1	7	25	178	24	610
30	5930	1	9	25	229	30	762
48	5948	1	14 1/2	25	368	48	1219

665 Series



IDEAL® Nylon Cable Ties

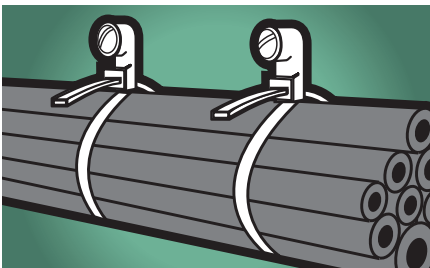
One piece 6/6 nylon for tying, bundling and positioning in industrial, PHAC, automotive and marine applications. Resistant to corrosion and fungus. Installs easily with or without tools.

Ideal® 665 Series

Self-locking easy install. Corrosion and fungus resistant. Tapered tips slip under and around cables. Flexible nylon conforms readily to most shapes. Uniform serrations along the tie aid "pull-through" to ready for final tensioning and cut off for a neat, tight harness.

NYLON CABLE TIES		CLAMPING RANGE				Min. Tensile Strength	Applicable Mil. Spec.
Ideal Part No.	Min. Dia. (in.)	Max. Dia. (in.)	Min. Dia. (mm)	Max. Dia. (mm)			
665							
66501	1/16	1	1.6	25.4	18 lbs.	MS3367-4	
66502	1/16	1 1/4	1.6	31.7	30 lbs.	MS3367-5	
66505	1/16	1 3/4	1.6	44.4	50 lbs.	MS3367-1	
66506	1/16	3	1.6	76.2	50 lbs.	MS3367-7	
66507	1/16	4	1.6	101.6	50 lbs.	MS3367-2	
66509	3/16	4	4.8	101.6	120 lbs.	MS3367-3	
66510	3/16	6	4.8	152.4	175 lbs.	MS3367-3	
66511	3/16	9	4.8	228.6	175 lbs.	MS3367-6	
66512	3/16	13	4.8	330.2	175 lbs.	None	

666 Series



Ideal® 666 Series

Self-locking easy install with Mounting heads, good for cable mounting. Corrosion and fungus resistant. Tapered tips slip under and around cables. Flexible nylon conforms readily to most shapes. Uniform serrations along the tie aid "pull-through" to ready for final tensioning and cut off for a neat, tight harness. Once ties are installed, pass a screw, bolt or rivet through the mounting head for bundling and mounting in one unit.

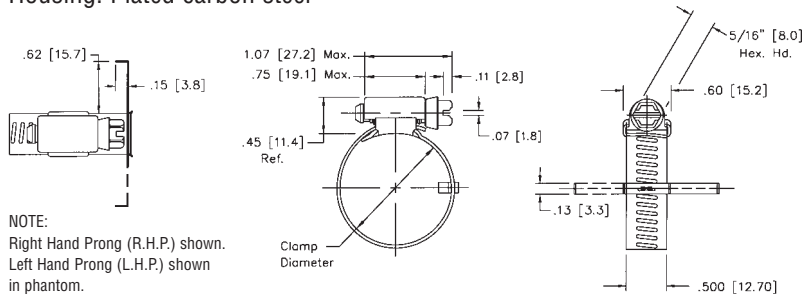
NYLON CABLE TIES		CLAMPING RANGE				Min. Tensile Strength	Mounting Hole Size (in.)
Ideal Part No.	Min. Dia. (in.)	Max. Dia. (in.)	Min. Dia. (mm)	Max. Dia. (mm)			
666							
6604	1/16	1 3/4	1.6	25.4	50 lbs.	0.208	
6605	1/16	4	1.6	31.7	50 lbs.	0.208	
6606	3/16	4	1.6	44.4	120 lbs.	0.250	

AC Clamps

AC clamps have stainless steel locator bar to aid in positioning of clamps over auto air conditioning fitting.

Ideal® 62 Series / Tridon® Automatic AC 684 Series

Locator Bar: Stainless steel.
Screw: 5/16" hex, plated carbon steel.
Band: 1/2" band width, stainless steel.
Housing: Plated carbon steel



NOTE:
Right Hand Prong (R.H.P.) shown.
Left Hand Prong (L.H.P.) shown
in phantom.

AC CLAMPS			CLAMPING RANGE			
SAE Sizes	Ideal Part No.	Tridon Part No.	Min. Dia. (in.)	Max. Dia. (in.)	Min. Dia. (mm)	Max. Dia. (mm)
	62	684				
8	6274	684-008	7/16	1	11	25
12	6277	684-012	1/2	1 1/4	13	32

62/684 Series

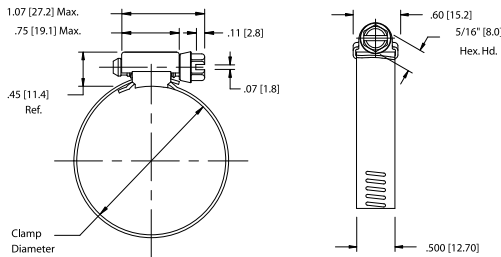


Military Worm Drive Clamps

Military Worm Drive Clamps are manufactured to military specification MS35842 and AA-52506B.

Ideal® 62MS Series / Tridon® 632 Series

Screw: 5/16" hex-head, stainless steel.
Band: 1/2" band width, 201/301 stainless steel.
Housing: 201/301 stainless steel.



MILITARY SPEC CLAMPS			CLAMPING RANGE			
SAE Sizes	Ideal Part No.	Tridon Part No.	Min. Dia. (in.)	Max. Dia. (in.)	Min. Dia. (mm)	Max. Dia. (mm)
	62MS	632				
6	6210	632-006	3/8	7/8	10	22
12	6211	632-012	1/2	1 1/4	13	32
24	6212	632-024	1	2	26	51
36	6213	632-036	1 3/4	2 3/4	44	70
48	6214	632-048	9/16	3 1/2	65	89
60	6215	632-060	5/16	4 1/4	84	108
104	6216	632-104*	4	7	102	178

* Non-stocking item

62MS/632 Series



61 Series



61001

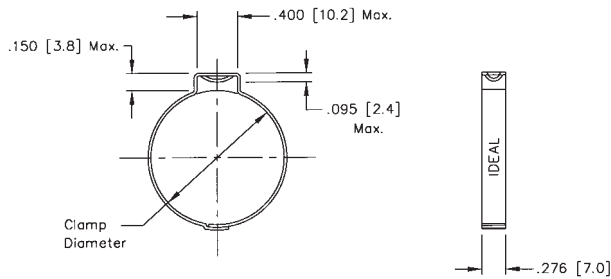


Single-Ear Pinch / Crimp Clamps

Pinch clamps are designed to fit most popular polyethylene and polybutylene water service lines, and are perfect for sprinkler systems, irrigation systems and most other low-pressure applications.

Ideal® 61 Series

- Marine Grade Clamps
- All 300 stainless steel for excellent corrosion resistance
- Welded construction for superior strength
- Easy installation
- Permanent, tamper-proof 360° seal
- Compatible with most clinching tools



Accessories

Crimp Clamp Tool

Part No. 61001 – Use to install or remove pinch / crimp clamps.

How to determine proper pinch/crimp clamp size:

Measure actual outside diameter (O.D.) of the hose on the fitting. Select the nominal size clamp nearest to that size, but always larger than the O.D. of the hose on the fitting.

PINCH CLAMPS	CLAMPING RANGE					
	Ideal Part No.	Nominal Diameter	Min. Dia. (in.)	Max. Dia. (in.)	Min. Dia. (mm)	Max. Dia. (mm)
61						
61198		3/4	0.669	0.779	17	20
61210		13/16	0.716	0.827	18	21
61256		1	0.898	1.008	23	25
61271		1 1/16	0.945	1.067	24	27
61316		1 1/4	1.122	1.244	29	31
61331		1 5/16	1.181	1.303	30	33
61346		1 3/8	1.240	1.362	32	34
61410		1 5/8	1.492	1.614	38	41
61425		1 11/16	1.551	1.673	40	42
61485		1 7/8	1.787	1.909	46	48

IDEAL® Flexible Hose Clamp Driver

Stop using that old, rigid nut driver and add some flexibility to your work! The flexible shaft and slipless grip provide 90-degree work access and are best in tight spaces such as compact car and boat engines, as well as plumbing repair applications. The socket fits mini and standard hose clamp screw heads. Just flip the socket for the desired size of 1/4" or 5/16" hex.

Part No. 9999V - Flexible Hose Clamp Driver

Accessories

IDEAL® Flexible Driver Socket Replacements

Our convenient replacement socket set includes: Two - 1/4" x 5/16" and Two - 5/16" x 3/8" for even greater versatility.

Part No. 8001V – Flexible Driver Socket Replacements

PowerGrip™ SB 46 Series

PowerGrip shrink band clamps are made of heat-sensitive thermo-plastic with a memory that prevents them from over-tightening or under-tightening. Shrinks on with a heat gun. They are environmentally friendly, virtually eliminating antifreeze leaks and groundwater contamination. Heat gun, nozzles, removal tool and replacement blades also available.

POWERGRIP		CLAMPING RANGE		
Description	Ideal Part No.	Nominal Hose ID	Min. Dia. (in.)	Max. Dia. (in.)
SB15	46015	1/4	1/2	11/16
SB19	46019	3/8	11/16	13/16
SB22	46022	1/2	13/16	15/16
SB25	46025	5/8	15/16	1 1/16
SB29	46029	3/4	1 1/16	1 3/16
SB34	46034	1	1 3/16	1 1/2
SB41	46041	1 1/4	1 1/2	1 3/4
SB48	46048	1 1/2	1 3/4	2
SB54	46054	1 3/4	2	2 1/4
SB60	46060	2	2 1/4	2 1/2
SB67	46067	2 1/4	2 1/2	2 3/4
SB73	46073	2 1/2	2 3/4	3
SB79	46079	2 3/4	3	3 1/4
SB86	46086	3	3 1/4	3 1/2
SB90	46090	3 1/8	3 1/2	3 5/8

Accessories

Part No. 46001
Heat Gun & Attachments

Part No. 46004
Removal Tool



8001V



9999V

46 Series



P-Clips



IDEAL® P-Clips

P-Clips are optimal for attaching and retaining hoses, pipes, cables, ducts and lines. Rubber coating and rounded tips prevent damage to soft hoses. Metal band retains shape and flexes without releasing its hold.

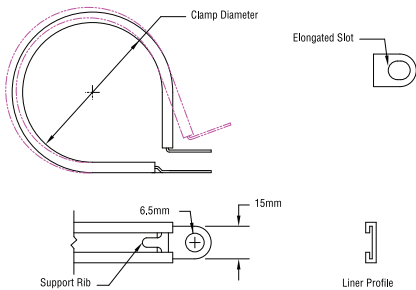
80002 Series

15mm band width
6mm hole diameter
Rubber-coated steel
Rounded tips

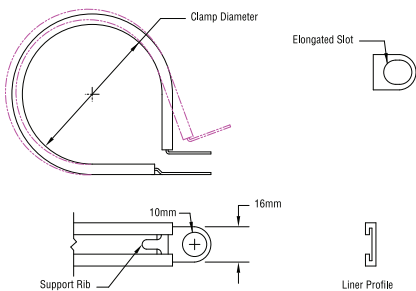
80003 Series

16mm band width
10mm hole diameter
Rubber-coated steel
Rounded tips

80002 Series



80003 Series



SIZING	CLAMPING RANGE
Ideal Part No.	Dia. Closed (mm)
80002 0004	4
80002 0006	6
80002 0009	9
80002 0010	10
80002 0012	12
80002 0013	13
80002 0015	15
80002 0016	16
80002 0018	18
80002 0019	19
80002 0020	20
80002 0022	22
80002 0025	25
80002 0027	27
80002 0029	29
80002 0032	32
80002 0035	35
80002 0038	38
80002 0040	40
80002 0045	45
80002 0048	48
80002 0050	50
80002 0055	55
80002 0057	57
80002 0060	60
80002 0064	64
80002 0066	66
80002 0070	70

SIZING	CLAMPING RANGE
Ideal Part No.	Dia. Closed (mm)
80003 0008	8
80003 0009	9
80003 0010	10
80003 0013	13
80003 0015	15
80003 0016	16
80003 0018	18
80003 0019	19
80003 0020	20
80003 0022	22
80003 0025	25
80003 0027	27
80003 0029	29
80003 0032	32
80003 0035	35
80003 0038	38
80003 0051	51

We offer one of the most comprehensive lines of heavy-duty clamping products in the business. Our heavy-duty products include T-Bolts, Spring Loaded T-Bolts, V-Inserts, Heavy-Duty and Constant Tension worm drive clamps. We cover the world of heavy-duty truck, off-road and industrial applications. Ask us about custom engineering a product to meet your special sealing requirements.

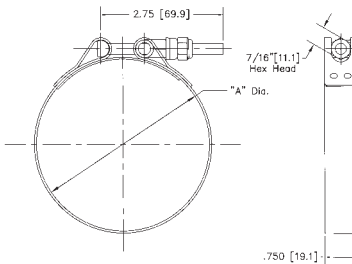
Heavy-duty T-Bolt clamps provide uniform sealing pressure for a positive, reliable seal. Designed for use in high vibration and large diameter applications common in heavy trucks, industrial machinery, off-road equipment, agricultural irrigation and machinery. Features a 3/4" wide stainless steel band with welded construction for reliability. Styles are available in Part Stainless or All Stainless steel.

Standard T-Bolts

The most widely used T-Bolt clamp design. Typical applications include truck air intake systems, cold side charge air systems, off-road equipment and industrial machinery.

IDEAL® 30010 Series / TRIDON® 813 Series

Lined Band & Bridge: 3/4" width, 201/301 stainless steel
 Bolt: 1/4" plated carbon steel
 Nut: 7/16" hex, plated carbon steel locknut, nylon insert
 Trunnion: plated carbon steel



IDEAL® 30011 Series / TRIDON® 811 Series

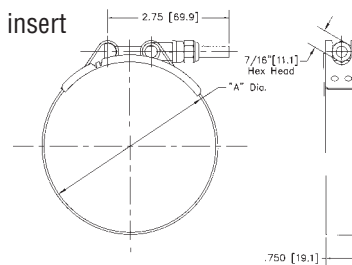
All 300 Grade Stainless Steel
 Marine Grade Clamps

Channel Bridge T-Bolts

Provides the added assurance of a rigid bridge liner to help prevent leak paths – good for softer hoses. Typical applications include truck air intake systems, cold side charge air systems, off-road equipment and industrial machinery.

IDEAL® 30020 Series / TRIDON® 814 Series

Lined Band & Bridge: 3/4" width, 201/301 stainless steel
 Bolt: 1/4" plated carbon steel
 Nut: 7/16" hex, plated carbon steel locknut, nylon insert
 Trunnion: plated carbon steel



IDEAL® 30021 Series / TRIDON® 810 Series

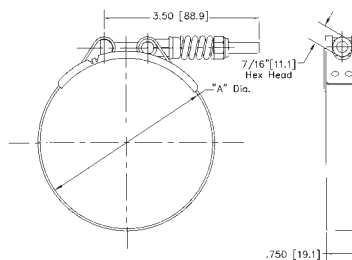
All 300 Grade Stainless Steel
 Marine Grade Clamps

Spring Loaded T-Bolts

Helical spring design compensates and provides constant tension to prevent leak paths due to temperature fluctuations. Typical applications include heavy truck charge air and cooling systems.

IDEAL® 30030 Series / TRIDON® 819 Series

Lined Band & Bridge: 3/4" width, 201/301 stainless steel
 Spring: plated carbon steel
 Bolt: 1/4" plated carbon steel
 Nut: 7/16" hex, plated carbon steel locknut, nylon insert
 Trunnion: plated carbon steel



Standard T-Bolt



Channel Bridge T-Bolt



Spring Loaded T-Bolt



T-Bolt Clamps *Recommended installation torque is 75 in.-lbs. (8.5Nm)*

STANDARD AND CHANNEL BRIDGE T-BOLTS													
SAE Sizes	Standard T-Bolt					Channel Bridge T-Bolt				Min. Dia. (in.)	Max. Dia. (in.)	Min. Dia. (mm)	Max. Dia. (mm)
	Ideal Part No.	Tridon Part No.	300 Stainless Steel		Ideal Part No.	Tridon Part No.	300 Stainless Steel						
			Ideal Part No.	Tridon Part No.			Ideal Part No.	Tridon Part No.					
-	30010 0138	813-138	30011 0138	811-138	30020 0138	814-138	30021 0138	810-138	1 3/8	1 9/16	35.1	38.6	
-	30010 0150	813-150	30011 0150	811-150	30020 0150	814-150	30021 0150	810-150	1 1/2	1 5/8	38.1	41.7	
-	30010 0163	813-163	30011 0163	811-163	30020 0163	814-163	30021 0163	810-163	1 5/8	1 7/8	41.4	46.0	
28	30010 0175	813-175	30011 0175	811-175	30020 0175	814-175	30021 0175	810-175	1 3/4	2	44.5	50.8	
32	30010 0188	813-188	30011 0188	811-188	30020 0188	814-188	30021 0188	810-188	1 7/8	2 3/16	47.8	55.6	
36	30010 0200	813-200	30011 0200	811-200	30020 0200	814-200	30021 0200	810-200	2	2 5/16	50.8	58.7	
40	30010 0213	813-213	30011 0213	811-213	30020 0213	814-213	30021 0213	810-213	2 1/8	2 7/16	54.1	62.0	
44	30010 0225	813-225	30011 0225	811-225	30020 0225	814-225	30021 0225	810-225	2 1/4	2 9/16	57.2	65.0	
48	30010 0238	813-238	30011 0238	811-238	30020 0238	814-238	30021 0238	810-238	2 3/8	2 11/16	60.5	68.3	
52	30010 0250	813-250	30011 0250	811-250	30020 0250	814-250	30021 0250	810-250	2 1/2	2 13/16	63.5	71.4	
56	30010 0263	813-263	30011 0263	811-263	30020 0263	814-263	30021 0263	810-263	2 5/8	2 15/16	66.8	74.7	
60	30010 0275	813-275	30011 0275	811-275	30020 0275	814-275	30021 0275	810-275	2 3/4	3 1/16	69.9	77.7	
64	30010 0288	813-288	30011 0288	811-288	30020 0288	814-288	30021 0288	810-288	2 7/8	3 3/16	73.2	81.0	
68	30010 0300	813-300	30011 0300	811-300	30020 0300	814-300	30021 0300	810-300	3	3 5/16	76.2	84.1	
72	30010 0313	813-313	30011 0313	811-313	30020 0313	814-313	30021 0313	810-313	3 1/8	3 7/16	79.5	87.4	
76	30010 0325	813-325	30011 0325	811-325	30020 0325	814-325	30021 0325	810-325	3 1/4	3 9/16	82.6	90.4	
80	30010 0338	813-338	30011 0338	811-338	30020 0338	814-338	30021 0338	810-338	3 3/8	3 11/16	85.9	93.7	
84	30010 0350	813-350	30011 0350	811-350	30020 0350	814-350	30021 0350	810-350	3 1/2	3 13/16	88.9	96.8	
88	30010 0363	813-363	30011 0363	811-363	30020 0363	814-363	30021 0363	810-363	3 5/8	3 15/16	92.2	100.1	
92	30010 0375	813-375	30011 0375	811-375	30020 0375	814-375	30021 0375	810-375	3 3/4	4 1/16	95.3	103.1	
100	30010 0400	813-400	30011 0400	811-400	30020 0400	814-400	30021 0400	810-400	4	4 5/16	101.6	109.5	
108	30010 0425	813-425	30011 0425	811-425	30020 0425	814-425	30021 0425	810-425	4 1/4	4 9/16	108.0	115.8	
116	30010 0450	813-450	30011 0450	811-450	30020 0450	814-450	30021 0450	810-450	4 1/2	4 13/16	114.3	122.2	
124	30010 0475	813-475	30011 0475	811-475	30020 0475	814-475	30021 0475	810-475	4 3/4	5 1/16	120.7	128.5	
132	30010 0500	813-500	30011 0500	811-500	30020 0500	814-500	30021 0500	810-500	5	5 5/16	127.0	134.9	
140	30010 0525	813-525	30011 0525	811-525	30020 0525	814-525	30021 0525	810-525	5 1/4	5 9/16	133.4	141.2	
148	30010 0550	813-550	30011 0550	811-550	30020 0550	814-550	30021 0550	810-550	5 1/2	5 13/16	139.7	147.6	
156	30010 0575	813-575	30011 0575	811-575	30020 0575	814-575	30021 0575	810-575	5 3/4	6 1/16	146.1	153.9	
164	30010 0600	813-600	30011 0600	811-600	30020 0600	814-600	30021 0600	810-600	6	6 5/16	152.4	160.3	
172	30010 0625	813-625	30011 0625	811-625	30020 0625	814-625	30021 0625	810-625	6 1/4	6 9/16	158.8	166.6	
180	30010 0650	813-650	30011 0650	811-650	30020 0650	814-650	30021 0650	810-650	6 1/2	6 13/16	165.1	173.0	
188	30010 0675	813-675	30011 0675	811-675	30020 0675	814-675	30021 0675	810-675	6 3/4	7 1/16	171.5	179.3	
196	30010 0700	813-700	30011 0700	811-700	30020 0700	814-700	30021 0700	810-700	7	7 5/16	177.8	185.7	
204	30010 0725	813-725	30011 0725	811-725	30020 0725	814-725	30021 0725	810-725	7 1/4	7 9/16	184.2	192.0	
212	30010 0750	813-750	30011 0750	811-750	30020 0750	814-750	30021 0750	810-750	7 1/2	7 13/16	190.5	198.4	
220	30010 0775	813-775	30011 0775	811-775	30020 0775	814-775	30021 0775	810-775	7 3/4	8 1/16	196.9	204.7	
228	30010 0800	813-800	30011 0800	811-800	30020 0800	814-800	30021 0800	810-800	8	8 5/16	203.2	211.1	
236	30010 0825	813-825	30011 0825	811-825	30020 0825	814-825	30021 0825	810-825	8 1/4	8 9/16	209.6	217.4	
244	30010 0850	813-850	30011 0850	811-850	30020 0850	814-850	30021 0850	810-850	8 1/2	8 13/16	215.9	223.8	

Additional sizes and designs available – Contact Ideal for information.

SPRING LOADED T-BOLTS							
SAE Sizes	Spring Loaded T-Bolt		Min. Dia. (In.)	Max. Dia. (In.)	Min. Dia. (mm)	Max. Dia. (mm)	Installation Torque
	Ideal Part No.	Tridon Part No.					
70	30030 0306	819-306	3 1/16	3 3/8	77.8	85.7	75.0 in. lbs. (8.5 Nm)
86	30030 0356	819-356	3 9/16	3 7/8	90.5	98.4	75.0 in. lbs. (8.5 Nm)
102	30030 0406	819-406	4 1/16	4 3/8	103.2	111.1	75.0 in. lbs. (8.5 Nm)
118	30030 0456	819-456	4 9/16	4 7/8	115.9	123.8	75.0 in. lbs. (8.5 Nm)

Additional sizes and designs available – Send your specifications to Ideal for a price quote.

V-Bands

V-Bands seal connections for flanged joints. Typical applications include filter housings, turbocharger systems, exhaust systems and industrial applications where a flanged connection is required. V-inserts can be manufactured to OE specifications and are made to order. Send full specifications for quotes.

IDEAL® 24000 Series

Lined Band: 300 stainless steel

V-Insert: 300 stainless steel

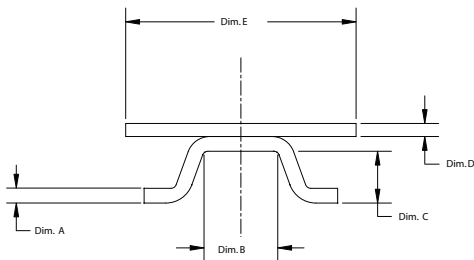
Bolt: 1/4", stainless steel

Nut: 7/16" hex, plated carbon steel locknut, nylon insert

Trunnion: 300 stainless steel

IDEAL Part No.	Nominal Dia. (in.) Part No.	V-Inserts			Bands	
		A	B	C	D	E
24000 0321	3.21	0.050	0.262	0.141	0.035	0.750
24000 0388	3.88	0.050	0.400	0.141	0.040	0.875
24000 0425	4.25	0.050	0.400	0.281	0.040	0.875
24000 0461	4.61	0.050	0.156	0.218	0.035	0.750
24000 0475	4.75	0.050	0.400	0.281	0.040	0.875
24000 0525	5.25	0.050	0.262	0.141	0.035	0.750
24000 0588	5.88	0.050	0.400	0.281	0.040	0.875

*Additional sizes made to order specification.



EGR Cooler Mounting (Rectangular T-Bolts)

Custom shaped to fit exhaust gas recirculation (EGR) cooler assemblies common in diesel trucks outfitted for new emissions standards. Manufactured to OE specifications provided. Samples shown here are non-stocking items. All EGR clamps are custom fit to cooler specification and made to order.

V-Band



EGR Clamps



60/6P/850 Series



6L/6M/843 Series



6X Series



High Performance Worm Drive Hose Clamps

Premium Pow'r-Gear® and Trimax® clamps are designed for high vibration and stubborn leakage applications such as industrial machinery, heavy truck, farm and off-road equipment engines. Features an extra wide 5/8" band and a wide profile housing that provides maximum engagement of screw threads to band. Engineered to deliver exceptionally high rates of band tension to handle the toughest sealing jobs.

IDEAL® Pow'r-Gear® 60 Series / Tridon® Trimax® 850 Series

All Stainless Steel

Screw: 5/16" hex-head, 410 stainless steel.

Band: 5/8" band width. 0.028" thick. 300 stainless steel.

Housing: 0.060" thick. 300 stainless steel.

IDEAL® Pow'r-Gear® 6P Series

All 300 stainless steel. Marine grade clamps.

Screw: 5/16" hex-head, 305 stainless steel.

Lined Band: 5/8" band width. 0.028" thick. 300 stainless steel.

Housing: 0.060" thick. 300 stainless steel.

IDEAL® Pow'r-Gear® 6L Series / Tridon® Trimax® 843 Series

For maximum protection of soft hoses. Protective liner prevents extrusion and shearing of hose through band notches. Extended band design prevents liner from skewing during installation.

All Stainless Steel

Screw: 5/16" hex-head, 410 stainless steel.

Band: 5/8" band width. 0.028" thick. 300 stainless steel.

Housing: 0.060" thick. 300 stainless steel.

IDEAL® Pow'r-Gear® 6M Series

All 300 stainless steel. Marine grade clamps.

Screw: 5/16" hex-head, 305 stainless steel.

Lined Band: 5/8" band width. 0.028" thick. 300 stainless steel.

Housing: 0.060" thick. 300 stainless steel.

IDEAL® Pow'r-Gear® 6X Series

Extra band notches allow greater opened and closed working diameters.

Only five sizes cover clamping diameters from 1 1/4" to 10 1/8".

Minimizes inventory investment without compromising applications coverage.

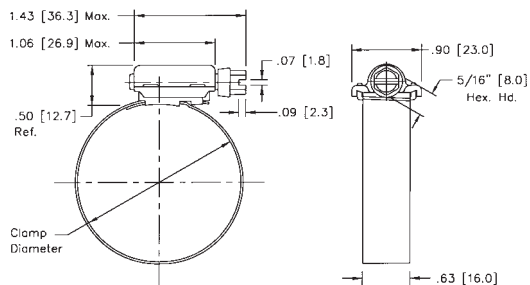
All Stainless Steel

Screw: 5/16" hex-head, 410 stainless steel.

Band: 5/8" band width. 0.028" thick. 300 stainless steel.

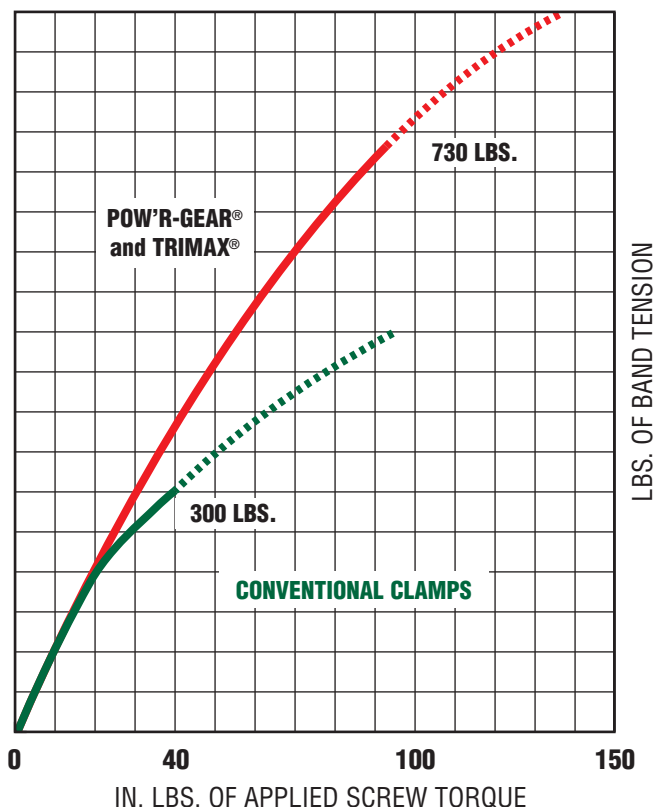
Housing: 0.060" thick. 300 stainless steel.

POW'R-GEAR® and TRIMAX® clamps deliver over 800 lbs. of band tension at 150 in.-lbs. of screw torque. That's more than twice the band tension of conventional clamps.



Measurements in illustrations are in inches [millimeters]

EXTENDED RANGE		CLAMPING RANGE					
SAE Sizes	Ideal Part No.	Min. Dia. (in.)	Max. Dia. (in.)	Min. Dia. (mm)	Max. Dia. (mm)	Hose I.D. Min. (in.)	Hose I.D. Max. (in.)
6X							
262	6X200	1 1/4	2 5/8	32	66	1 1/4	2
412	6X300	2	4 1/8	51	104	2	3 1/2
612	6X400	4	6 1/8	102	155	4	5 1/2
912	6X500	6	9 1/8	153	231	6	8 1/2
1012	6X600	7	10 1/8	178	257	7	9 1/2

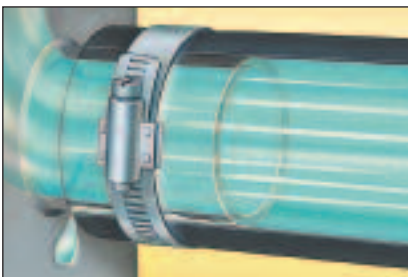


HIGH PERFORMANCE CLAMP									CLAMPING RANGE					
SAE Sizes	Ideal Part No.	Tridon Part No.	Ideal Part No.	Tridon Part No.	Ideal Part No.	Tridon Part No.	Ideal Part No.	Tridon Part No.	Min. Dia. (in.)	Max. Dia. (in.)	Min. Dia. (mm)	Max. Dia. (mm)	Hose I.D. Min. (in.)	Hose I.D. Max. (in.)
	60	850	6P	N/A	6L	843	6M	N/A						
175	60175	850-175	6P175	-	6L175	843-175	6M175	-	1	1 3/4	25	45	7/8	1 1/8
212	60200	850-200	6P200	-	6L200	843-200	6M200	-	1 1/4	2 1/8	32	54	1	1 1/2
262	60250	850-250	6P250	-	6L250	843-250	6M250	-	1 3/4	2 5/8	45	66	1 1/2	2
312	60300	850-300	6P300	-	6L300	843-300	6M300	-	2 1/4	3 1/8	57	79	2	2 1/2
362	60350	850-350	6P350	-	6L350	843-350	6M350	-	2 3/4	3 5/8	70	92	2 1/2	3
412	60400	850-400	6P400	-	6L400	843-400	6M400	-	3 1/4	4 1/8	83	105	3	3 1/2
462	60450	850-450	6P450	-	6L450	843-450	6M450	-	3 3/4	4 5/8	95	117	3 1/2	4
512	60500	850-500	6P500	-	6L500	843-500	6M500	-	4 1/4	5 1/8	108	130	4	4 1/2
562	60550	850-550	6P550	-	6L550	843-550	6M550	-	4 3/4	5 5/8	121	143	4 1/2	5
612	60600	850-600	6P600	-	6L600	843-600	6M600	-	5 1/4	6 1/8	133	155	5	5 1/2
662	60650	850-650	6P650	-	6L650	843-650	6M650	-	5 3/4	6 5/8	146	168	5 1/2	6
712	60700	850-700	6P700	-	6L700	843-700	6M700	-	6 1/4	7 1/8	159	181	6	6 1/2
762	60750	850-750	6P750	-	6L750	843-750	6M750	-	6 3/4	7 5/8	172	193	6 1/2	7
812	60800	850-800	6P800	-	6L800	843-800	6M800	-	7 1/4	8 1/8	184	206	7	7 1/2
862	60850	850-850	6P850	-	6L850	843-850	6M850	-	7 3/4	8 5/8	197	219	7 1/2	8
912	60900	850-900	6P900	-	6L900	843-900	6M900	-	8 1/4	9 1/8	210	232	8	8 1/2

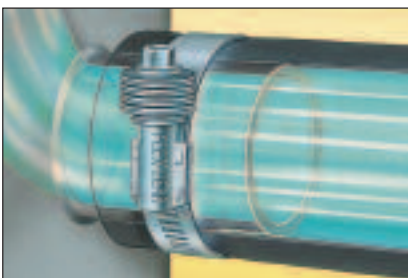
Additional sizes available - Contact Ideal for information.

We recommend a minimum of all 300 grade stainless steel clamps for marine applications. For applications directly over galvanized steel, we recommend an intermediate layer of non-conductive material such as vinyl electrical tape.

Flex-Gear® HD®



Non-compensating clamp cannot adjust during extreme temperature changes, allowing leaks to occur



Flex-Gear adjusts with the hose and fitting to maintain constant tension on the connection, eliminating leak paths

Flex-Gear® Constant Tension Clamps

Using a Belleville spring design to eliminate "cold flow" leakage, Flex-Gear® clamps adjust with the hose and fitting to maintain constant tension on the connection, eliminating leak paths. Excellent choice for fluctuating temperature applications and thermal compensation.

Features and Benefits:

Belleville spring and clamp construction is built to respond to constant temperature fluctuations. The larger, heavier-gauge, precision-formed springs provide higher rates of band tension and adjustment for a more dependable seal. Inner liner protects against shearing of the hose surfaces. Provides a uniform 360° seal. Reusable.

IDEAL® Flex-Gear HD® Clamps 41 Series

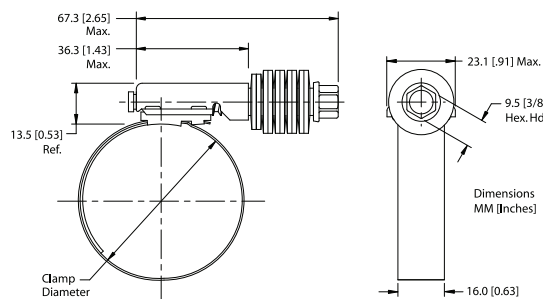
Screw: 3/8" hex-head. Plated carbon steel.
 Band: 5/8" band width, 300 stainless steel.
 Liner: 300 stainless steel.
 Housing: 300 stainless steel.
 Springs: 300 stainless steel.

IDEAL® Flex-Gear HD® Clamps 45 Series

Screw: 3/8" hex-head, 410 stainless steel.
 Band: 5/8" band width, 300 stainless steel.
 Liner: 300 stainless steel.
 Housing: 300 stainless steel.
 Springs: 300 stainless steel.

FLEX-GEAR HD		CLAMPING RANGE						
SAE Sizes	Ideal Part No.	Ideal Part No.	Min. Dia. (in.)	Max. Dia. (in.)	Min. Dia. (mm)	Max. Dia. (mm)	Fits Hose I.D.	
	41	45					Min. (in.)	Max. (in.)
175	41175	45175	1	1 3/4	25	45	7/8	1 1/8
212	41200	45200	1 1/4	2 1/8	32	54	1	1 1/2
262	41250	45250	1 3/4	2 5/8	45	67	1 1/2	2
312	41300	45300	2 1/4	3 1/8	57	79	2	2 1/2
362	41350	45350	2 3/4	3 5/8	70	92	2 1/2	3
412	41400	45400	3 1/4	4 1/8	83	105	3	3 1/2
462	41450	45450	3 3/4	4 5/8	95	117	3 1/2	4
512	41500	45500	4 1/4	5 1/8	108	130	4	4 1/2
562	41550	45550	4 3/4	5 5/8	121	143	4 1/2	5
612	41600	45600	5 1/4	6 1/8	133	155	5	5 1/2
662	41650	45650	5 3/4	6 5/8	146	168	5 1/2	6
712	41700	45700	6 1/4	7 1/8	159	181	6	6 1/2
762	41750	45750	6 3/4	7 5/8	172	193	6 1/2	7
812	41800	45800	7 1/4	8 1/8	184	206	7	7 1/2
862	41850	45850	7 3/4	8 5/8	197	219	7 1/2	8
912	41900	45900	8 1/4	9 1/8	210	232	8	8 1/2

Additional sizes available on request.



IDEAL® Flex-Gear® Clamps 43 Series

Screw: 5/16" hex-head. Plated carbon steel.
 Band: 9/16" band width, 300 stainless steel.
 Liner: 300 stainless steel.
 Housing: 300 stainless steel.
 Springs: 300 stainless steel.

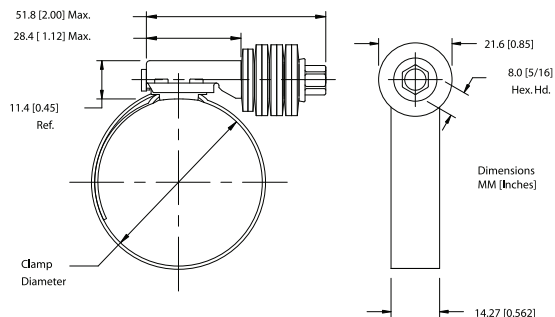
IDEAL® Flex-Gear® Clamps 47 Series

Screw: 5/16" hex-head. 410 stainless steel.
 Band: 9/16" band width, 300 stainless steel.
 Liner: 300 stainless steel.
 Housing: 300 stainless steel.
 Springs: 300 stainless steel.



FLEX-GEAR		CLAMPING RANGE						
SAE Sizes	Ideal Part No.	Ideal Part No.	Min. Dia. (in.)	Max. Dia. (in.)	Min. Dia. (mm)	Max. Dia. (mm)	Fits Hose I.D.	
							Min.(in.)	Max.(in.)
	43	47						
10	43010	47010	9/16	1 1/16	14	27	3/8	5/8
12	43012	47012	5/8	1 1/4	16	32	3/8	3/4
16	43016	47016	13/16	1 1/2	21	38	3/4	7/8
20	43020	47020	13/16	1 3/4	20	44	3/4	1 1/8
24	43024	47024	1 1/16	2	27	51	7/8	1 3/8
28	43028	47028	1 5/16	2 1/4	33	57	1 1/4	1 5/8
32	43032	47032	1 9/16	2 1/2	40	63	1 1/2	1 7/8
36	43036	47036	1 13/16	2 3/4	46	70	1 3/4	2
40	43040	47040	2 1/16	3	52	76	2	2 1/4
44	43044	47044	2 5/16	3 1/4	59	82	2 1/4	2 1/2
48	43048	47048	2 9/16	3 1/2	65	89	2 1/2	3

Additional sizes available on request.



We recommend a minimum of all 300 grade stainless steel clamps for marine applications. For applications directly over galvanized steel, we recommend an intermediate layer of non-conductive material such as vinyl electrical tape.

Thermal Flex™



Micro Flex™



Thermal Flex™ & Micro Flex™ Clamps

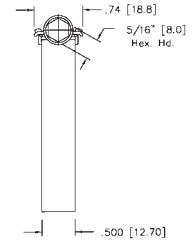
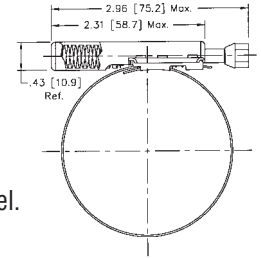
The captured helical spring design provides a continuous load to compensate for hose compression and thermal dimensional changes (cold flow).

Tridon® Thermal Flex™ 820 Series

All 300 Stainless Steel
 Screw: 5/16" hex-head, non-slotted. 300 stainless steel.
 Band: 1/2" band width, 300 stainless steel.
 Housing: 300 stainless steel.
 Spring: 300 stainless steel.

Tridon® Thermal Flex™ 825 Series

All 300 Stainless Steel
 Screw: 5/16" hex-head, non-slotted. 300 stainless steel.
 Lined Band: 1/2" band width, 300 stainless steel.
 Housing: 300 stainless steel.
 Spring: 300 stainless steel.



SAE Sizes	THERMAL FLEX		CLAMPING RANGE			
	Tridon Part No.		Min. (in.)	Max. (in.)	Min. (mm)	Max. (mm)
	820	825				
175	820-175	825-175	1	1 3/4	25	45
212	820-200	825-200	1 1/4	2 1/8	32	54
262	820-250	825-250	1 3/4	2 5/8	45	66
312	820-300	825-300	2 1/4	3 1/8	57	79
362	820-350	825-350	2 3/4	3 5/8	70	92
412	820-400	825-400	3 1/4	4 1/8	83	105
462	820-450	825-450	3 3/4	4 5/8	95	117
512	820-500	825-500	4 1/4	5 1/8	108	130
562	820-550	825-550	4 3/4	5 5/8	121	143
612	820-600	528-600	5 1/4	6 1/8	133	155
662	820-650	825-650	5 3/4	6 5/8	146	168
712	820-700	825-700	6 1/4	7 1/8	159	181
762	820-750	825-750	6 3/4	7 5/8	172	193
812	820-800	825-800	7 1/4	8 1/8	184	206
862	820-850	825-850	7 3/4	8 5/8	197	219
912	820-900	825-900	8 1/4	9 1/8	210	232

Tridon® Micro Flex™ 391 Series

All Stainless Steel
 Screw: 1/4" hex-head, non-slotted. 410 stainless steel.
 Lined Band: 5/16" band width, 300 stainless steel.
 Housing: 300 stainless steel.
 Spring: 300 stainless steel.
 For small diameters.

SAE Sizes	MICRO FLEX	CLAMPING RANGE			
	Tridon Part No.	Min. in.	Max. in.	Min. mm	Max. mm
4	391-004	1/4	5/8	6.3	15.7
5	391-005	7/16	11/16	11.2	17.5
6	391-006	7/16	25/32	12.2	19.8
8	391-008	1/2	29/32	15.5	23.1
10	391-010	9/16	1 1/16	14.2	26.9
12	391-012	11/16	1 1/4	17.5	31.7

IDEAL® Tilt Bin Display

The IDEAL Tilt Bin Merchandisers arrive fully loaded and labeled with the most popular clamp sizes for your market. Use these merchandisers in your counter area as an effective way to organize your clamp inventory and increase profits.

Size: 23 5/8" x 5 1/4" x 13". Contains: 285 clamps each



These hassle-free bins pop right out to make re-filling and organizing simple.

HARDWARE ASSORTMENTS					
67-1 Series - #6703-1 (51/53) All Stainless Steel; 1/2" Band Width, plus micros			68 Series - #6803-0 (51/53) Hy-Gear® All Stainless Steel; 9/16" Band Width, plus micros		
SAE Sizes	Clamp Part Nos.	Qty. per Tilt Bin	SAE Sizes	Clamp Part Nos.	Qty. per Tilt Bin
Micro 4	62604	50	Micro 4	62604	50
Micro 6	62606	30	Micro 6	62606	30
8	6708-1	30	8	6808	30
10	6710-1	50	10	6810	50
12	6712-1	40	12	6812	40
16	6716-1	30	16	6816	30
20	6720-1	20	20	6820	20
24	6724-1	20	24	6824	20
36	6736-1	10	36	6836	10
56	6756-1	5	56	6856	5

PLUMBING ASSORTMENTS					
67-5 Series - #6703-5 (51/53) High-Nickel Grade Stainless Steel; IAPMO Listed; 1/2" Band Width, plus micros			63 Series - #6303-0 (51/53) Hy-Gear® High-Nickel Grade Stainless Steel; IAPMO Listed; 9/16" Band Width, plus micros		
SAE Sizes	Clamp Part Nos.	Qty. per Tilt Bin	SAE Sizes	Clamp Part Nos.	Qty. per Tilt Bin
Micro 4	62604	50	Micro 4	62604	50
Micro 6	62606	30	Micro 6	62606	30
8	6708-5	30	8	6308	30
10	6710-5	45	10	6310	45
16	6716-5	60	16	6316	60
20	6720-5	30	20	6320	30
28	6728-5	30	28	6328	30
36	6736-5	10	36	6336	10

57 Series AUTOMOTIVE ASSORTMENT #57030 (51/53) Stainless Steel 1/2" Band and Housing with Plated Steel screw, plus micros		
SAE Sizes	Clamp Part Nos.	Qty. per Tilt Bin
Micro 4	6204	50
Micro 6	6206	50
10	5710	50
12	5712	60
20	5720	20
24	5724	20
28	5728	25
36	5736	10

MARINE ASSORTMENTS					
67-4 Series - #6703-4 (51/53) All 300 Grade Stainless Steel; IAPMO Listed; 1/2" Band Width, plus micros			63-4 Series - #6303-4 (51/53) Hy-Gear® All 300 Grade Stainless Steel; IAPMO Listed 9/16" Band Width, plus micros		
SAE Sizes	Clamp Part Nos.	Qty. per Tilt Bin	SAE Sizes	Clamp Part Nos.	Qty. per Tilt Bin
Micro 4	62604	50	Micro 4	62604	50
Micro 6	62606	30	Micro 6	62606	30
8	67004 0008	30	8	63004 0008	30
10	67004 0010	45	10	63004 0010	45
16	67004 0016	60	16	63004 0016	60
20	67004 0020	30	20	63004 0020	30
28	67004 0028	30	28	63004 0028	30
36	67004 0036	10	36	63004 0036	10

50 Series AUTOMOTIVE ASSORTMENT #50030 (51/53) Hy-Gear® Stainless Steel 9/16" Band and Housing with Plated Steel screw, plus micros		
SAE Sizes	Clamp Part Nos.	Qty. per Tilt Bin
Micro 4	6204	50
Micro 6	6206	50
10	5010	50
12	5012	60
20	5020	20
24	5024	20
28	5028	25
36	5036	10

We recommend a minimum of all 300 grade stainless steel clamps for marine applications. For applications directly over galvanized steel, we recommend an intermediate layer of non-conductive material such as vinyl electrical tape.

IDEAL® Profit Centers - 120 Display

This compact, wall-mounted or counter display sells 120 full-size and Micro-Gear® clamps from 1/4" to 2 3/4" clamping ranges. Available in multiple assortments, the 120 display helps you sell more clamps in less space.

Size: 14 5/8" x 15 1/16" x 4 3/8". Contains: 120 clamps each*

*Assortments available with or without barcoded clamps.



Hardware Assortments

64 Series (Part No. 6402)

All stainless steel, 3/8" screw.
9/16" band width.

67-1 Series (Part No. 6702-1)

All stainless steel.
1/2" band width.

68 Series (Part No. 6802)

All stainless steel, 5/16" screw.
9/16" band width.

Marine Assortments

67-4 Series (Part No. 6704-4)

All 300 stainless steel.
1/2" band width.
IAPMO listed with UPC shield.

63-4 Series (Part No. 6304-4)

All 300 stainless steel.
9/16" band width.
IAPMO listed with UPC shield.

67-6 Series (Part No. 6702-6)

All 316 stainless steel.
1/2" band width.

Plumbing Assortments

67-5 Series (Part No. 6702-5)

All high-nickel grade stainless steel.
1/2" band width.
IAPMO listed with UPC shield.

63 Series (Part No. 6304)

All high-nickel grade stainless steel.
9/16" band width.
IAPMO listed with UPC shield.

Industrial Assortments

50 Series (Part No. 5002)

Band and housing: Stainless steel.
Screw: Plated steel.
9/16" band width.

54 Series (Part No. 5402)

Band and housing: Stainless steel.
Screw: Plated steel, collared.
9/16" band width.

57 Series (Part No. 5702)

Band and housing: Stainless steel.
Screw: Plated steel.
1/2" band width.

Automotive Assortments

50 Series (Part No. 5004)

Band and housing: Stainless steel.
Screw: Plated steel.
9/16" band width.

54 Series (Part No. 5404)

Band and housing: Stainless steel.
Screw: Plated steel, collared.
9/16" band width.

57 Series (Part No. 5704)

Band and housing: Stainless steel.
Screw: Plated steel.
1/2" band width.

Part No.	Series	Market Description	Sizes and Quantities Per Assortment									
			Micro 04	Micro 06	10	12	16	20	24	28	36	
5004	50 & 62P Series	Automotive Assortment	20	20	20	20	-	10	-	20	10	
5404	54 & 62P Series	Automotive Assortment	20	20	20	20	-	10	-	20	10	
5704	57 & 62P Series	Automotive Assortment	20	20	20	20	-	10	-	20	10	
6402	64 & 62M Series	Hardware Assortment	20	10	40	-	10	20	10	-	10	
6702-1	67-1 & 62M Series	Hardware Assortment	20	10	40	-	10	20	10	-	10	
6802	68 & 62M Series	Hardware Assortment	20	10	40	-	10	20	10	-	10	
5002	50 & 62P Series	Industrial Assortment	20	10	40	-	10	20	10	-	10	
5402	54 & 62P Series	Industrial Assortment	20	10	40	-	10	20	10	-	10	
5702	57 & 62P Series	Industrial Assortment	20	10	40	-	10	20	10	-	10	
6304	63 & 62M Series	Plumbing Assortment	20	10	10	20	-	30	-	20	10	
6702-5	67-5 & 62M Series	Plumbing Assortment	20	10	40	10	-	20	-	10	10	
6304-4	63-4 & 62M Series	Marine Assortment	20	10	10	20	-	30	-	20	10	
6702-4	67-4 & 62M Series	Marine Assortment	20	10	40	10	-	20	-	10	10	
6702-6	67-6 & 62J Series	Marine Assortment	20	10	40	10	-	20	-	10	10	

IDEAL® Profit Centers - 450 Display

This display features 450 full-size and Micro-Gear® clamps from 1/4" to 5" clamping ranges. Available in multi assortments, the 450 display includes a built-in size chart for easy clamp selection and a plan-o-gram. Mount it to a pegboard or place on a shelf.

Size: 26 1/4" x 25" x 6 1/4". Contains: 450 clamps each*

*Assortments available with or without barcoded clamps. All assortments ship with merchandiser.



Hardware Assortments

67-1 Series (Part No. 67050)

All stainless steel.
1/2" band width.

68 Series (Part No. 6805)

All stainless steel.
9/16" band width.

Marine Assortments

67-4 Series (Part No. 6702-4)

All 300 stainless steel.
1/2" band width.
IAPMO listed with UPC shield.

63-4 Series (Part No. 6705-6)

All 300 stainless steel.
9/16" band width.
IAPMO listed with UPC shield.

67-6 Series (Part No. 6305)

All 316 stainless steel.
1/2" band width.

Plumbing Assortments

67-5 Series (Part No. 6705-5)

All high-nickel grade stainless steel.
1/2" band width.
IAPMO listed with UPC shield.

63 Series (Part No. 6305)

All high-nickel grade stainless steel.
9/16" band width.
IAPMO listed with UPC shield.

Industrial Assortments

50 Series (Part No. 5005)

Band and housing: Stainless steel.
Screw: Plated steel.
9/16" band width.

57 Series (Part No. 5705)

Band and housing: Stainless steel.
Screw: Plated steel.
1/2" band width.

Automotive Assortments

50 Series (Part No. 5001)

Band and housing: Stainless steel.
Screw: Plated steel.
9/16" band width.

54 Series (Part No. 5405)

Band and housing: Stainless steel.
Screw: Plated steel, collared.
9/16" band width.

Sizes and Quantities Per Assortment

Part No.	Series	Market Description		Sizes and Quantities Per Assortment												
				Micro 04	Micro 06	8	10	12	16	20	24	28	32	36	48	72
5001	50 & 62P Series	Automotive	Assortment	80	80	-	80	80	-	20	20	60	-	20	10	-
5405	54 & 62P Series	Automotive	Assortment	80	80	-	80	80	-	20	20	60	-	20	10	-
6705-1	67-1 & 62M Series	Hardware	Assortment	50	30	30	50	90	60	60	20	10	20	20	-	10
6805	68 & 62M Series	Hardware	Assortment	50	30	30	50	90	60	60	20	10	20	20	-	10
5005	50 & 62P Series	Industrial	Assortment	70	40	40	60	90	40	40	30	10	10	10	-	10
5705	57 & 62P Series	Industrial	Assortment	70	40	40	60	90	40	40	30	10	10	10	-	10
6305	63 & 62M Series	Plumbing	Assortment	50	30	50	80	30	70	50	20	40	10	10	-	10
6705-5	67-5 & 62M Series	Plumbing	Assortment	50	30	30	50	90	60	60	20	10	20	20	-	10
6305-4	63-4 & 62M Series	Marine	Assortment	50	30	50	80	30	70	50	20	40	10	10	-	10
6705-4	67-4 & 62M Series	Marine	Assortment	50	30	30	50	90	60	60	20	10	20	20	-	10
6705-6	67-6 & 62J Series	Marine	Assortment	50	30	30	50	90	60	60	20	10	20	20	-	10

Packaging

IDEAL® Packaging

Ideal products are offered in Visi-Paks™, 10 pack boxes, bulk packs, and a variety of convenient, retail-friendly configurations.

Visi-Paks display the products to the consumer and include application information helpful in the retail or DIY markets.



**Jar O' Clamps®
MARINE**

**Jar O' Clamps®
HARDWARE**



**IDEAL®
Polybags**



**IDEAL®
10-Packs**



**Visi-Pak™
Packaging**



Retail-Ready Cut Cases



**Bucket of Turn-Key
R.V. Sewer Hose Clamps**



Bucket of R.V. Sewer Hose Clamps

Cross-Reference – General Purpose / Specialty

Ideal	Breeze	Dixon	Murray	MTD	Norton	ABA	Norma	Tridon
50 Series	100 Series	1000 Series	N/A	N/A	N/A	N/A	N/A	150 Series
52 Series	N/A	N/A	N/A	N/A	N/A	N/A	N/A	300 Series
52F Series	F Series	N/A	N/A	N/A	N/A	MINI G	N/A	905 Series (Also FI-X Series)
53 Series	92 Series	HL Series	48 Series	GSE Series	143 Series	N/A	N/A	613 Series (Also 'ET' Series)
54 Series	N/A	N/A	N/A	N/A	N/A	N/A	N/A	N/A
56 Series	N/A	LS Series	N/A	N/A	N/A	N/A	N/A	500 Series
57 Series	62 Series	HS Series	H Series	HF Series	015 Series	N/A	N/A	611 Series
58 Series	N/A	LSS Series	N/A	N/A	N/A	N/A	N/A	550 Series
60 Series	HTM Series	HTM Series	N/A	N/A	N/A	N/A	N/A	850 Series
6L Series	HTM-L Series	N/A	N/A	N/A	N/A	N/A	N/A	843 Series
6M Series	HTM-SPL Series	N/A	N/A	N/A	N/A	N/A	N/A	N/A
6P Series	HTM-SP Series	N/A	N/A	N/A	N/A	N/A	EXTRA - /16 C8 W4	N/A
6X Series	HP Series	HP Series	N/A	N/A	N/A	N/A	N/A	N/A
62M Series	37/67 Series	MAH Series	MMF-SS Series	MF-SS Series	031 Series	22 Series	N/A	345 Series
62P Series	35 Series	MH Series	MM Series	MF Series	011 Series	21 Series	N/A	325 Series (Also MH-X Series)
63 Series	N/A	N/A	N/A	N/A	N/A	N/A	N/A	225 Series
63-4 Series	300 Series	N/A	N/A	N/A	033 Series	N/A	N/A	N/A
64 Series	N/A	N/A	N/A	N/A	N/A	N/A	N/A	N/A
65-E Series	94 Series	N/A	48-SS 305 Series	N/A	103 Series	N/A	N/A	615 Series
67-M Series	Unknown	N/A	N/A	N/A	N/A	N/A	N/A	N/A
67-1 Series	64 Series	N/A	H-SS Series	HF-SS Series	N/A	N/A	N/A	625 Series (Also HSS-X Series)
67-4 Series	N/A	N/A	N/A	N/A	N/A	N/A	N/A	620P Series
67-5 Series	63 Series	HAS Series	HF-SS Series	HF-SS Series	035 Series	N/A	N/A	620 Series (Also HAS-X Series)
67-6 Series	Unknown	N/A	N/A	N/A	N/A	N/A	N/A	665 Series
68 Series	200 Series	200 Series	N/A	N/A	N/A	N/A	N/A	N/A
53202	N/A	N/A	N/A	N/A	N/A	N/A	TORRO 7.5 W2	122
53302	N/A	N/A	EB9	N/A	N/A	SX 9 W2	TORRO 9 W2	132
53402	7200	N/A	EB12	N/A	N/A	SX 12 W2	TORRO 12 W2	142
53303	N/A	N/A	N/A	N/A	N/A	SX 9 W3	TORRO 9 W3	133
53403	N/A	N/A	N/A	N/A	N/A	N/A	TORRO 12 W3	143
53304	N/A	N/A	N/A	N/A	N/A	SX 9 W4	TORRO 12 W4	134
53404	7300	N/A	N/A	N/A	N/A	SX 12 W4	TORRO 12 W4	144
53305	N/A	N/A	N/A	N/A	N/A	SX 9 W5	TORRO 9 W5	135
53405	7600	N/A	N/A	N/A	N/A	SX 12 W5	TORRO 12 W5	145
Turn-Key Series	N/A	N/A	N/A	N/A	N/A	N/A	N/A	N/A

Cross-Reference – Heavy Duty

CLAMP TYPE	IDEAL	TRIDON	BREEZE	CLAMPKO	RG RAY	VOSS
Standard T-Bolt	30010	813	B9200	C410C	650	T-40
Standard T-Bolt (All 300 SS)	30011	811	B9300	C410N	N/A	N/A
Channel Bridge T-Bolt	30020	814	B9222	N/A	700	N/A
Channel Bridge T-Bolt (All 300 SS)	30021	810	N/A	N/A	N/A	N/A
Spring Loaded T-Bolt	30030	819	B9226	94	667	N/A
Heavy Duty Worm Drive	60	850	HTM Standard	N/A	N/A	N/A
	6P	N/A	HTM SP	N/A	N/A	N/A
	6L	843	HTM-L SP	N/A	N/A	N/A
	6M	N/A	HTS-L	N/A	N/A	N/A
	6X	N/A	HP	N/A	N/A	N/A
Constant Tension Worm Drive	45	N/A	CT-LSS	N/A	N/A	N/A
	47	N/A	CT-94	N/A	N/A	N/A

N/A - Not Available

Stainless Steel Material Facts and Properties:

- The 300 grades of stainless steel are known as “non-magnetic.”
- The 400 grades of stainless steel and plated steel are known as “magnetic.”
- The 200 and 300 grades of stainless steel resist corrosion better than 400 grades of stainless steel and better than plated steel.
- Only 300 grades should be considered for marine applications.
- Applications that require IAPMO listed products can include 201 and 300 grade stainless steels.
- Our clamps are compliant with the RoHS directive. All of our clamps are free of Hexavalent or Chromium 6 agents and are known as “hex-free.”

Notes

Tomkins

Industrial and Automotive



AirAware™

www.schraderbridgeport.com/tpms



Amflo®

www.plews-edelmann.com/amflo



EDELMANN®

www.plews-edelmann.com



IDEAL™

www.idealclamps.com



**PLEWS™
LubriMatic**

www.plews-edelmann.com



SCHRADERBRIDGEPORT®

www.schraderbridgeport.com



Stant®

www.stant.com



TRIDON®

www.tridonclamps.com



TRU-FLATE®

www.plews-edelmann.com

AirAware:

Tire Pressure Monitoring Systems (TPMS)

Amflo:

Air Line Accessories

Pneumatic Hoses

Edelmann:

Power Steering Hose Assemblies

Automotive Fittings

Brake Lines

Transmission Oil Cooler Lines & Fittings

Engine Oil Cooler Lines

Unicoil™ Hose Benders

Ideal:

Hose Clamps

T-Bolts

Plews/LubriMatic:

Oils, Greases & Spray Lubricants

Lubrication Equipment

Schrader-Bridgeport:

Air Compressors & Pressure Washers

Tire Valves (Passenger & Truck)

Stant:

Fuel, Radiator & Oil Filler Caps

Thermostats

Cooling & Fuel Cap Testers

Tridon:

Hose Clamps

T-Bolts

Tru-Flate:

Air Line Accessories

Tire Gauges & Hardware

Camel® Tire Hardware & Repair



Headquarters

3200 Parker Drive, St. Augustine, FL 32084-0897

Phone (904) 829-1000
Toll Free (800) 221-0100
Fax (904) 825-1121
Web Address www.idealclamps.com

Customer Service

IDEAL Branded Product 3200 Parker Drive St. Augustine, FL 32084-0897	TRIDON Branded Product 8100 Tridon Drive Smyrna, TN 37167-6603
Phone (904) 829-1000	Phone (615) 459-5800
Toll Free (800) 221-0100	Toll Free (800) 251-3220
Fax (904) 829-6994	Fax (615) 355-1104
Email: customerservice@ideal-tridonclamps.com	

This catalog also available in downloadable form at www.idealclamps.com